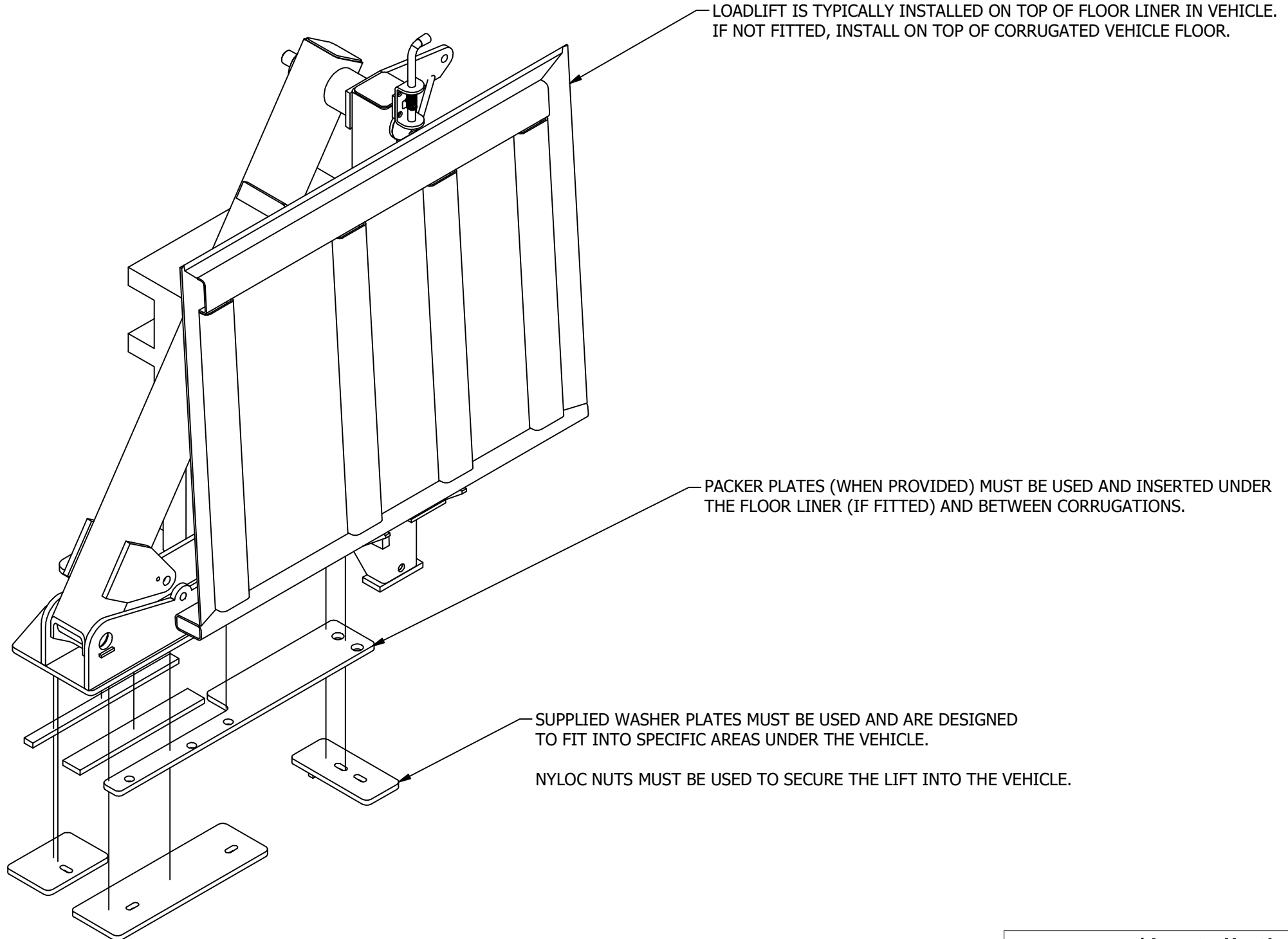


LOADLIFT INSTALLATION GUIDELINES

NOTE: THE LIFT SHOWN IS A GENERIC MODEL, FOR REPRESENTATION USE ONLY.

- INSTALLATIONS SHOULD ONLY BE CARRIED OUT BY COMPETENT PERSONS.
- THE LIFT CAN BE BROKEN DOWN INTO THREE SEPERATE COMPONENTS. THE LOADLIFT, PACKER PLATES AND WASHER PLATES AS SHOWN ON THE NEXT PAGE.
- THE LOADLIFT SHOULD BE WIRED WITH 135A CABLE AND EARTHED AS CLOSE TO THE LIFT AS POSSIBLE THROUGH THE CHASSIS. THE LIFT SHOULD BE FUSED WITH A 125A FUSE AS CLOSE TO THE VEHICLE BATTERY AS POSSIBLE.
- A DATUM HOLE EXISTS ON MOST BASEPLATES, THIS WILL BE IDENTIFIED AS A YELLOW MARKED HOLE. BUT CAN ALSO BE IDENTIFIED AS AN 8.5mm THRU HOLE. THIS TYPICALLY ALLIGNS WITH A LASHING RING IN THE VEHICLE.
- THE LIFT WILL ARRIVE WITH IT'S MAX WORKING LOAD PRE SET.
- THE LIFT IS DESIGNED TO BE INSTALLED IN AN EMPTY PLY-LINED VEHICLE. IT THEREFORE MAY BE NECESSARY TO REMOVE SOME INTERNAL COMPONENTS TO AVOID INTERFERENCE.
- FURTHER INFORMATION IS AVAILABLE BY CONTACTING PENNY ENGINEERING LTD.

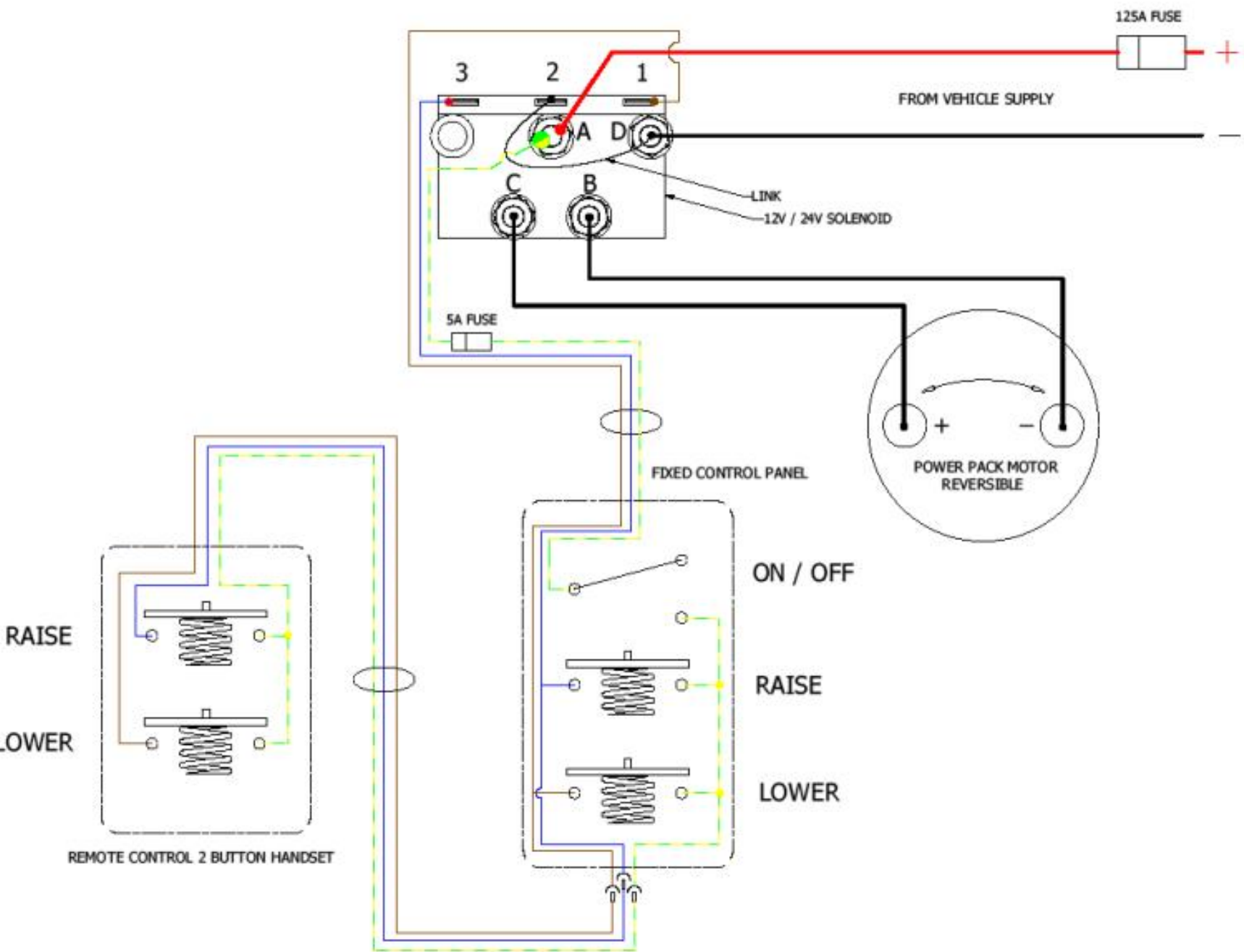
Installation Guidelines					
Drawn By lewis.glynn	Checked By	Stock no.	Material	<div><div><div>Penny Hydraulics</div><div>GROUP</div></div><div><small>©2021 This drawing is the property of Penny Hydraulics Limited and must not be copied or amended in part or in whole unless prior, express written permission is obtained from the Company</small><div>Tel: +44 (0) 1246 811475 Mail: sales@pennyhydraulics.com Web: www.pennyhydraulics.com</div></div></div>	
Approved By	Approval Date	Item Type			
UNLESS OTHERWISE STATED, GENERAL TOLERANCES TO ISO 2768 TOLERANCE CLASS 'm' FOR MACHINING & 'v' FOR FABRICATION :REMOVE ALL BURRS AND SHARP EDGES :MACHINED SURFACES 3.2 Ra UOS :WELDS ACCEPTABLE TO BS EN ISO 5817 - CAT:D UOS		Mass N/A			
		Drawing Type			
DIMENSION	MACHINED	FABRICATED	Dimensions mm	Title Loadlift Installation Guidelines	
UP TO 3	± 0.1		Scale on A3 1 : 8		
OVER 3 UP TO 6	± 0.1	± 0.5	Design State		
OVER 6 UP TO 30	± 0.2	± 1.0	Projection		
OVER 30 UP TO 120	± 0.3	± 1.5		Drawing no.	Revision
OVER 120 UP TO 400	± 0.5	± 2.5		Installation Guidelines	A
OVER 400 UP TO 1000	± 0.8	± 4.0			
OVER 1000 UP TO 2000	± 1.2	± 6.0			
OVER 2000 UP TO 4000	± 2.0	± 8.0			
ANGULAR	± 0.15°	± 1.0°			
				Sheet	1 of 6



Installation Guidelines

Drawn By lewis.glynn	Checked By	Stock no.	Material	<div><div>Penny Hydraulics</div><div>GROUP</div><div><small>©2021 This drawing is the property of Penny Hydraulics Limited and must not be copied or amended in part or in whole unless prior, express written permission is obtained from the Company</small></div><div>Tel: +44 (0) 1246 811475 Mail: sales@pennyhydraulics.com Web: www.pennyhydraulics.com</div></div>
Approved By	Approval Date	Item Type		
UNLESS OTHERWISE STATED, GENERAL TOLERANCES TO ISO 2768 TOLERANCE CLASS 'm' FOR MACHINING & 'v' FOR FABRICATION :REMOVE ALL BURRS AND SHARP EDGES :MACHINED SURFACES 3.2 Ra UOS :WELDS ACCEPTABLE TO BS EN ISO 5817 - CAT:D UOS			Mass N/A	
			Drawing Type	
DIMENSION	MACHINED	FABRICATED	Dimensions mm	Title Loadlift Installation Guidelines
UP TO 3	± 0.1		Scale on A3 1 : 8	
OVER 3 UP TO 6	± 0.1	± 0.5	Design State	
OVER 6 UP TO 30	± 0.2	± 1.0		Drawing no. Installation Guidelines
OVER 30 UP TO 120	± 0.3	± 1.5		
OVER 120 UP TO 400	± 0.5	± 2.5		
OVER 400 UP TO 1000	± 0.8	± 4.0		
OVER 1000 UP TO 2000	± 1.2	± 6.0		
OVER 2000 UP TO 4000	± 2.0	± 8.0		Revision A
ANGULAR	± 0.15°	± 1.0°	Projection	Sheet 2 of 6

WIRING DIAGRAM



+12V & GROUND SHOWN
CONNECTED TO SOLENOID

WIRING INSTRUCTIONS

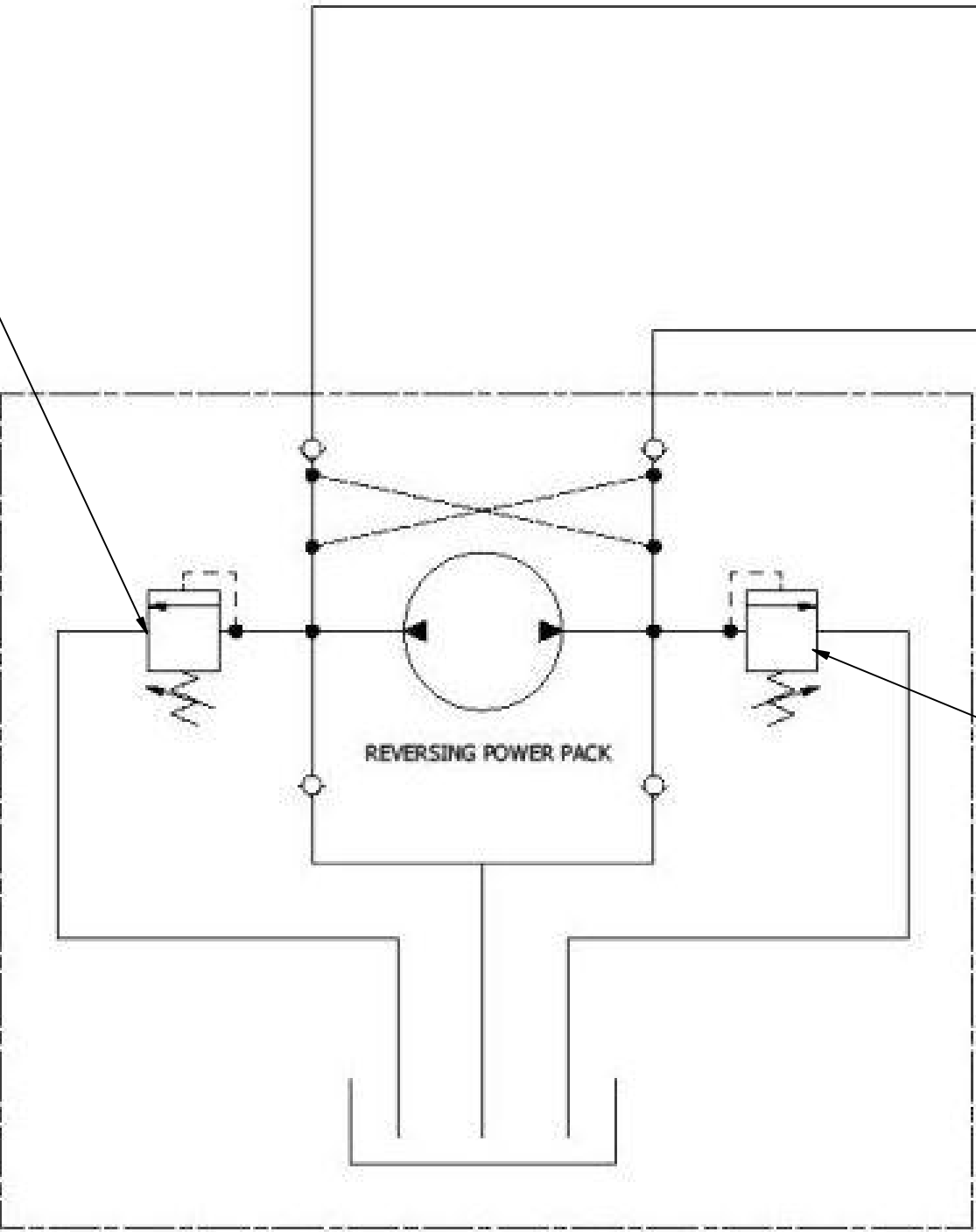
- 125A INLINE MIDI FUSE MUST BE INSTALLED AS CLOSE TO VEHICLE BATTERY AS POSSIBLE.
- LIFT TO BE GROUNDED TO CHASSIS AT SHORTEST DISTANCE POSSIBLE.
- PROVIDED 135A CABLE TO BE USED.

Installation Guidelines

Drawn By lewis.glynn		Checked By		Stock no.		Material		<div><div><div>Penny Hydraulics</div><div>GROUP</div></div><div>©2021 This drawing is the property of Penny Hydraulics Limited and must not be copied or amended in part or in whole unless prior, express written permission is obtained from the Company</div><div>Tel: +44 (0) 1246 811475 Mail: sales@pennyhydraulics.com Web: www.pennyhydraulics.com</div></div> <div>Station Road Clowne Chesterfield Derbyshire S43 4AB</div>	
Approved By		Approval Date		Item Type					
UNLESS OTHERWISE STATED, GENERAL TOLERANCES TO ISO 2768 TOLERANCE CLASS 'm' FOR MACHINING & 'v' FOR FABRICATION :REMOVE ALL BURRS AND SHARP EDGES :MACHINED SURFACES 3.2 Ra UOS :WELDS ACCEPTABLE TO BS EN ISO 5817 - CAT:D UOS				Mass N/A		Drawing Type			
DIMENSION		MACHINED		FABRICATED		Dimensions mm		Title Loadlift Installation Guidelines	
UP TO 3		± 0.1							
OVER 3 UP TO 6		± 0.1		± 0.5					
OVER 6 UP TO 30		± 0.2		± 1.0		Scale on A3 1 : 12			
OVER 30 UP TO 120		± 0.3		± 1.5		Design State			
OVER 120 UP TO 400		± 0.5		± 2.5					
OVER 400 UP TO 1000		± 0.8		± 4.0					
OVER 1000 UP TO 2000		± 1.2		± 6.0					
OVER 2000 UP TO 4000		± 2.0		± 8.0		Projection		Drawing no. Installation Guidelines	
ANGULAR		± 0.15°		± 1.0°				Revision A	
								Sheet 3 of 6	

HYDRAULIC SCHEMATIC

PRE SET FROM FACTORY



FULL BORE

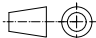
LIFT RAM

ANNULUS

PRE SET FROM FACTORY

Installation Guidelines

Drawn By lewis.glynn	Checked By	Stock no.
Approved By	Approval Date	Item Type
UNLESS OTHERWISE STATED, GENERAL TOLERANCES TO ISO 2768 TOLERANCE CLASS 'm' FOR MACHINING & 'v' FOR FABRICATION :REMOVE ALL BURRS AND SHARP EDGES :MACHINED SURFACES 3.2 Ra UOS :WELDS ACCEPTABLE TO BS EN ISO 5817 - CAT:D UOS		Mass N/A
DIMENSION	MACHINED	FABRICATED
UP TO 3	± 0.1	
OVER 3 UP TO 6	± 0.1	± 0.5
OVER 6 UP TO 30	± 0.2	± 1.0
OVER 30 UP TO 120	± 0.3	± 1.5
OVER 120 UP TO 400	± 0.5	± 2.5
OVER 400 UP TO 1000	± 0.8	± 4.0
OVER 1000 UP TO 2000	± 1.2	± 6.0
OVER 2000 UP TO 4000	± 2.0	± 8.0
ANGULAR	± 0.15°	± 1.0°

Installation Guidelines			
Stock no.	Material	<div><div>Penny Hydraulics</div><div>GROUP</div><div><p>©2021 This drawing is the property of Penny Hydraulics Limited and must not be copied or amended in part or in whole unless prior, express written permission is obtained from the Company</p><p>Tel: +44 (0) 1246 811475 Mail: sales@pennyhydraulics.com Web: www.pennyhydraulics.com</p></div></div>	Station Road Clowne Chesterfield Derbyshire S43 4AB
Item Type			
Mass N/A			
Drawing Type			
Dimensions mm	Title	Loadlift Installation Guidelines	
Scale on A3 1 : 12			
Design State			
Projection			
	Drawing no. Installation Guidelines	Revision A	Sheet 4 of 6

MIKROSPIN POWERPACK
ADJUSTMENT

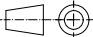
- 1. DETERMINE WHICH RELIEF VALVE IS CONNECTED TO FULL BORE & WHICH SIDE TO THE ANNULUS. PRESSURE RELIEF ADJUSTMENTS ARE SHOWN IN IMAGED BELOW CIRCLED IN RED.
- 2. WIND OUT TO DECERASE PRESSURE IN POWERPACK. ADJUSTMENT SHOULD ONLY BE CARRIED OUT WHEN ABSOLUTELY NECESSARY. DECREASING PRESSURE REDUCES THE MAX WORKING LOAD OF THE LIFT.

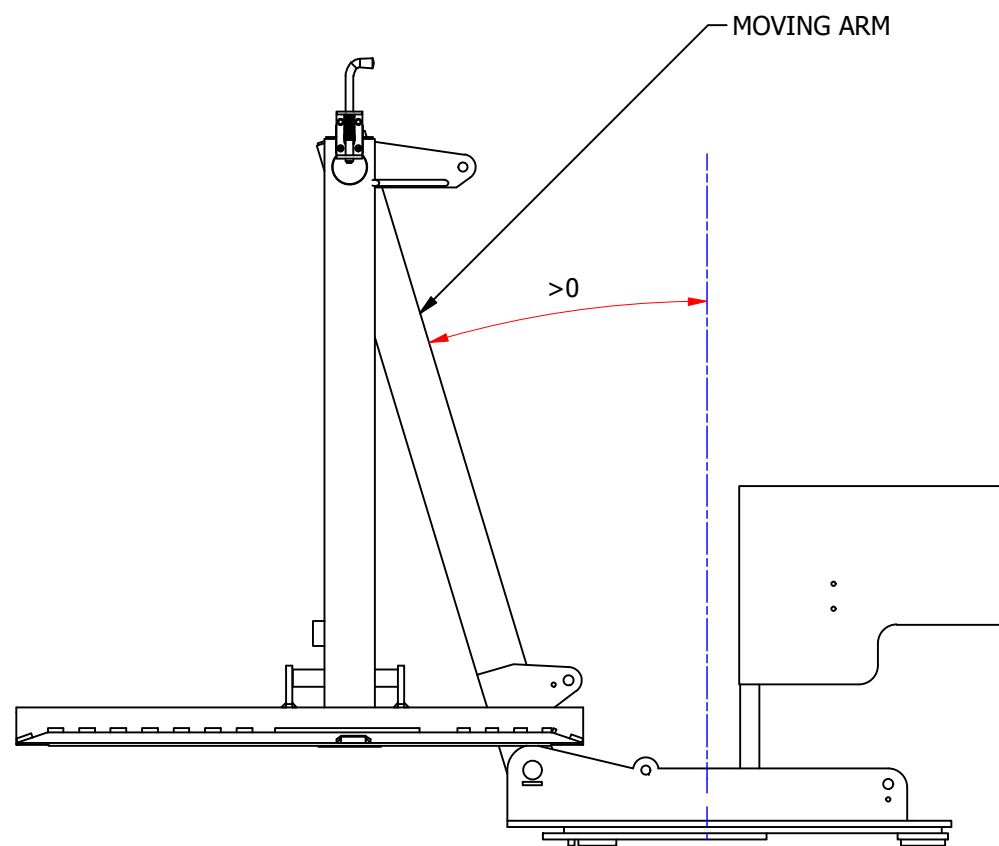


FLUIDLINK POWERPACK
ADJUSTMENT

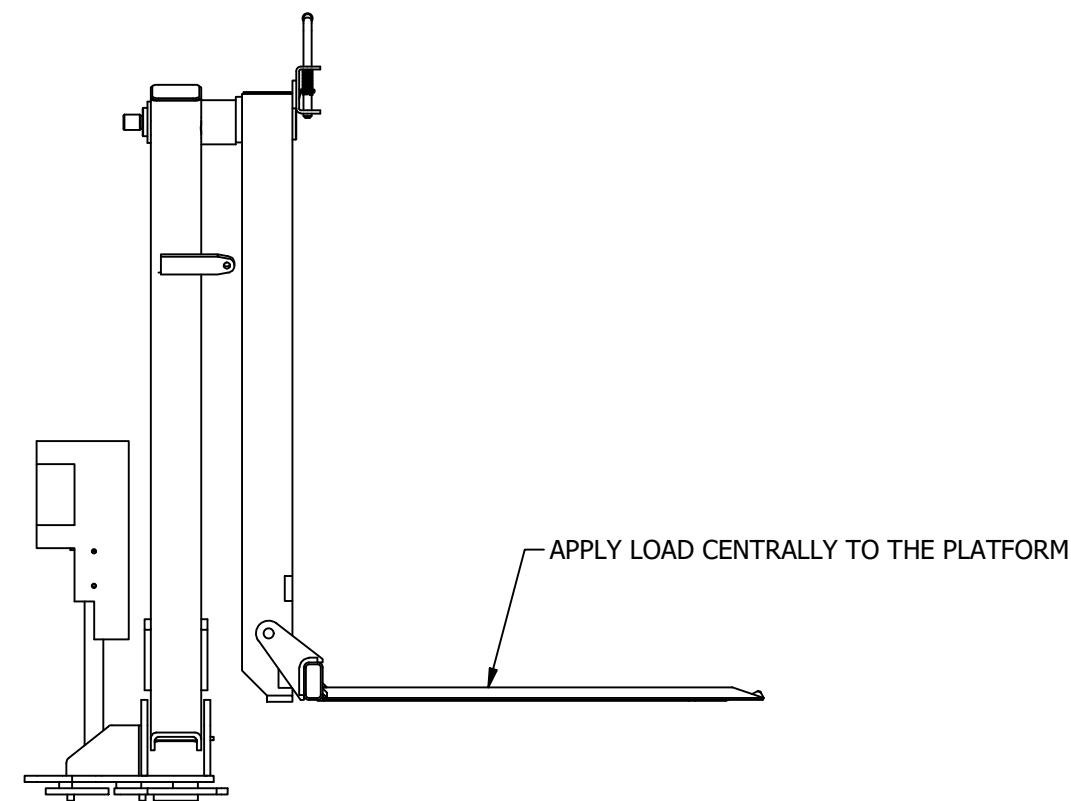
- 1. DETERMINE WHICH RELIEF VALVE IS CONNECTED TO FULL BORE & WHICH SIDE TO THE ANNULUS. PRESSURE RELIEF ADJUSTMENTS ARE SHOWN IN IMAGED TO THE SIDE CIRCLED IN GREEN.
- 2. WIND OUT TO DECERASE PRESSURE IN POWERPACK. ADJUSTMENT SHOULD ONLY BE CARRIED OUT WHEN ABSOLUTELY NECESSARY. DECREASING PRESSURE REDUCES THE MAX WORKING LOAD OF THE LIFT.



			Installation Guidelines			
Drawn By lewis.glynn	Checked By	Stock no.	Material	<div><div>Penny Hydraulics</div><div>GROUP</div><div><small>©2021 This drawing is the property of Penny Hydraulics Limited and must not be copied or amended in part or in whole unless prior, express written permission is obtained from the Company</small><div>Tel: +44 (0) 1246 811475 Mail: sales@pennyhydraulics.com Web: www.pennyhydraulics.com</div></div></div>	Station Road Clowne Chesterfield Derbyshire S43 4AB	
Approved By	Approval Date	Item Type				
UNLESS OTHERWISE STATED, GENERAL TOLERANCES TO ISO 2768 TOLERANCE CLASS 'm' FOR MACHINING & 'v' FOR FABRICATION :REMOVE ALL BURRS AND SHARP EDGES :MACHINED SURFACES 3.2 Ra UOS :WELDS ACCEPTABLE TO BS EN ISO 5817 - CAT:D UOS		Mass	N/A			
		Drawing Type				
DIMENSION	MACHINED	FABRICATED	Dimensions mm	Title	Loadlift Installation Guidelines	
UP TO 3	± 0.1					
OVER 3 UP TO 6	± 0.1	± 0.5				
OVER 6 UP TO 30	± 0.2	± 1.0				
OVER 30 UP TO 120	± 0.3	± 1.5	Scale on A3 1 : 12			
OVER 120 UP TO 400	± 0.5	± 2.5				
OVER 400 UP TO 1000	± 0.8	± 4.0				
OVER 1000 UP TO 2000	± 1.2	± 6.0				
OVER 2000 UP TO 4000	± 2.0	± 8.0	Projection	Drawing no.	Revision	Sheet
ANGULAR	± 0.15°	± 1.0°				
				Installation Guidelines	A	5 of 6



OVERLOAD TEST POSITION



INSTALLATION TESTING PROCEDURE

LOAD TESTING SHOULD ONLY BE CARRIED OUT BY COMPETENT PERSONS.

1. CORDON OFF AN AREA FOR TESTING.
2. PERFORM A THOROUGH EXAMINATION OF THE INSTALLATION AND LIFT.
3. INCREMENTALLY FUNCTION TEST THE LIFT UP TO AND INCLUDING THE MAX WORKING LOAD OF THE LIFT.
4. WITH THE MWL OF THE LIFT ON THE PLATFORM, OPERATE THE LIFT OUT THE VEHICLE. AFTER THE MOVING ARM HAS TRAVELLED PAST IT'S VERTICAL POSITION AND HAS AN ANGLE GREATER THAN 0. APPLY 25% OF THE MWL OF THE LIFT INCREMENTALLY.
5. CHECK THE INSTALLATION WHILST APPLYING THE WEIGHT.
6. ONCE THERE IS 125% OF THE MWL OF THE LIFT ON THE PLATFORM. LOWER THE LIFT TO THE GROUND OUTSIDE THE VEHICLE.
7. ATTEMPT TO RAISE THE LOAD, THE PRESSURE RELIEF SHOULD PREVENT THIS. IF NOT ADJUSTMENT SHOULD BE CARRIED OUT TO SET THE LIFT TO THE ORIGINAL MWL.
8. REMOVE ALL WEIGHT.

Installation Guidelines

Drawn By lewis.glynn		Checked By	Stock no.	Material	<div><div><div>Penny Hydraulics</div><div>GROUP</div></div><div><div>©2021 This drawing is the property of Penny Hydraulics Limited and must not be copied or amended in part or in whole unless prior, express written permission is obtained from the Company</div><div>Tel: +44 (0) 1246 811475</div><div>Mail: sales@pennyhydraulics.com</div><div>Web: www.pennyhydraulics.com</div></div></div>	Station Road Clowne Chesterfield Derbyshire S43 4AB		
Approved By		Approval Date	Item Type					
UNLESS OTHERWISE STATED, GENERAL TOLERANCES TO ISO 2768 TOLERANCE CLASS 'm' FOR MACHINING & 'v' FOR FABRICATION :REMOVE ALL BURRS AND SHARP EDGES :MACHINED SURFACES 3.2 Ra UOS :WELDS ACCEPTABLE TO BS EN ISO 5817 - CAT:D UOS			Mass N/A					
DIMENSION			MACHINED	FABRICATED	Drawing Type			
UP TO 3			± 0.1		Dimensions mm			
OVER 3 UP TO 6			± 0.1	± 0.5	Scale on A3 1 : 12			
OVER 6 UP TO 30			± 0.2	± 1.0	Design State			
OVER 30 UP TO 120			± 0.3	± 1.5				
OVER 120 UP TO 400			± 0.5	± 2.5				
OVER 400 UP TO 1000			± 0.8	± 4.0				
OVER 1000 UP TO 2000			± 1.2	± 6.0				
OVER 2000 UP TO 4000			± 2.0	± 8.0				
ANGULAR			± 0.15°	± 1.0°	Projection	Drawing no. Installation Guidelines	Revision A	Sheet 6 of 6