

**PennyHydraulics**

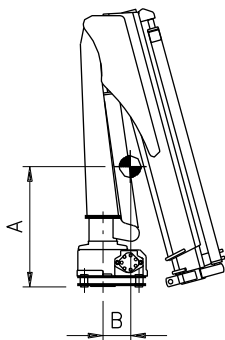
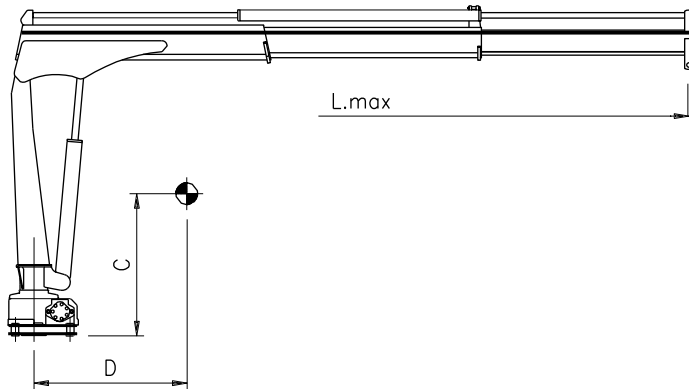
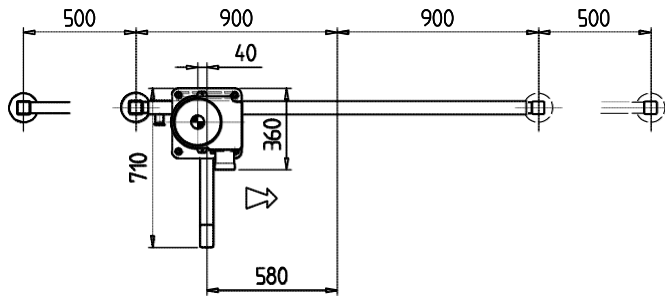
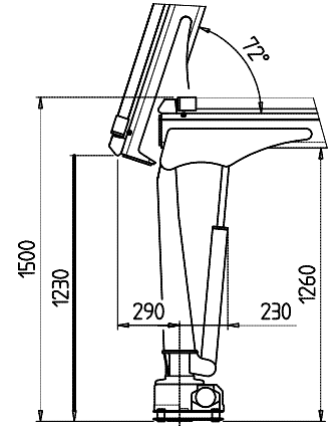
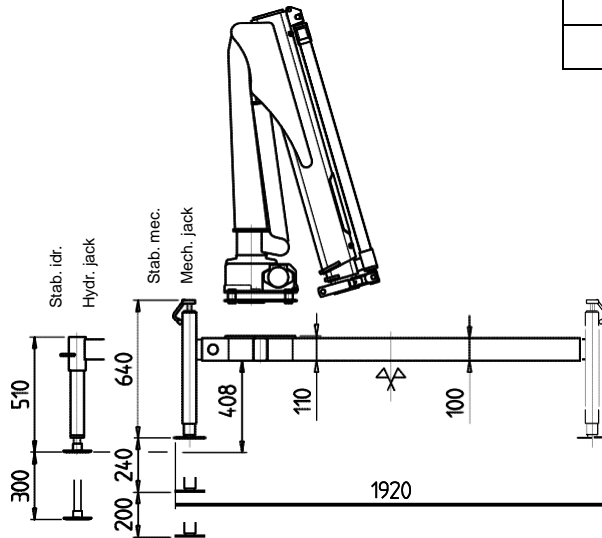
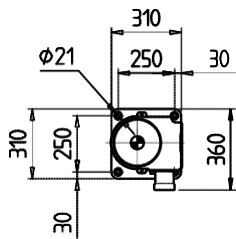
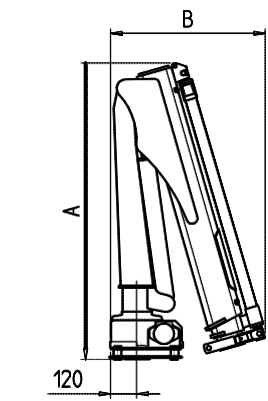
VEHICLE MOUNTED EQUIPMENT

**TECHNICAL  
SHEET**



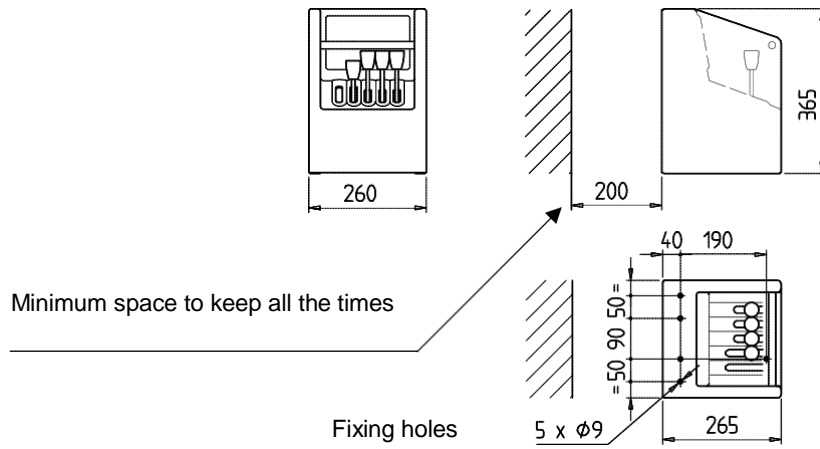
**PH150**

DIMENSIONS		
CRANE	A	B
PH 150.1	1360	690
PH 150.2	1360	690
PH 150.3	1360	790

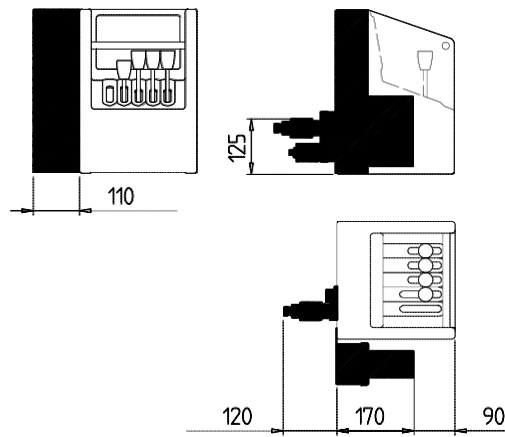


CRANE	A	B	C	D	L max
PH 150.1	510	120	770	500	3000
PH 150.2	520	140	830	610	3000
PH 150.3	530	170	880	840	4000

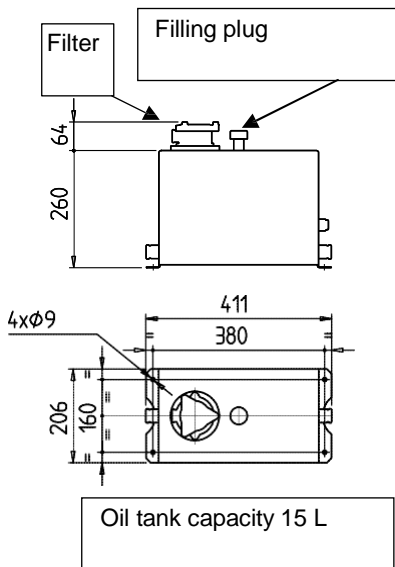
Console standard / Standard control station



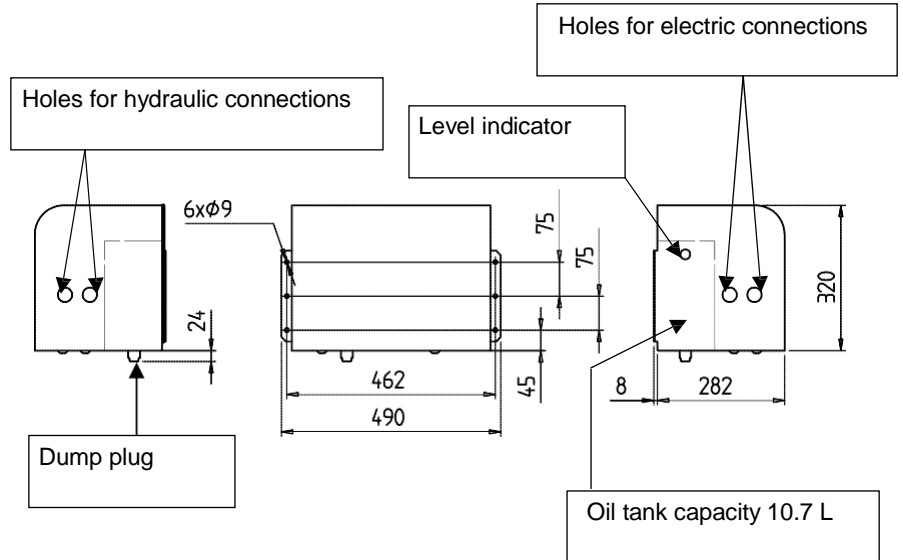
Control station with remote control



Oil tank for H version



Power pack (E version)



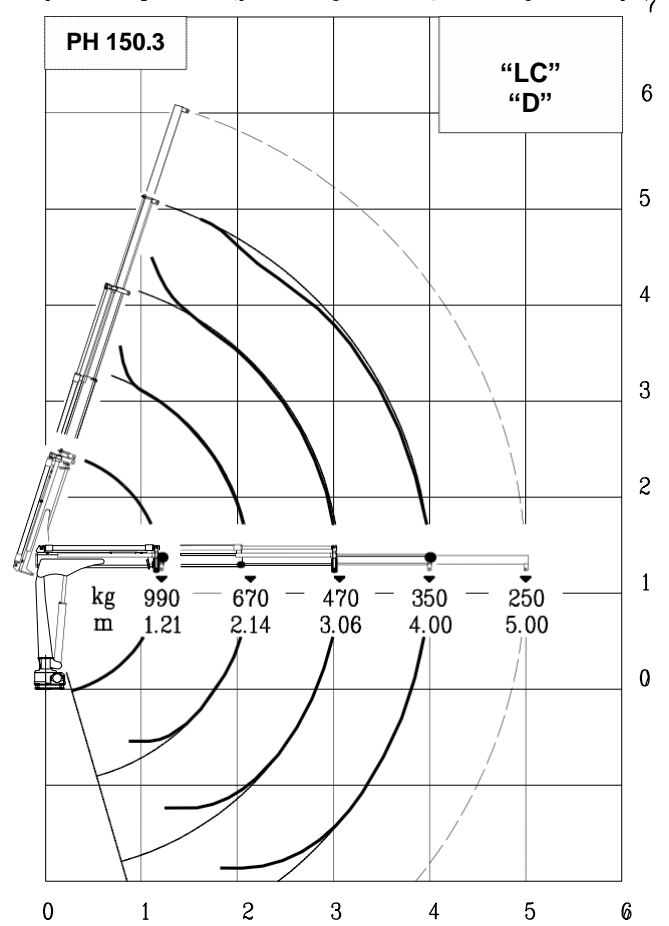
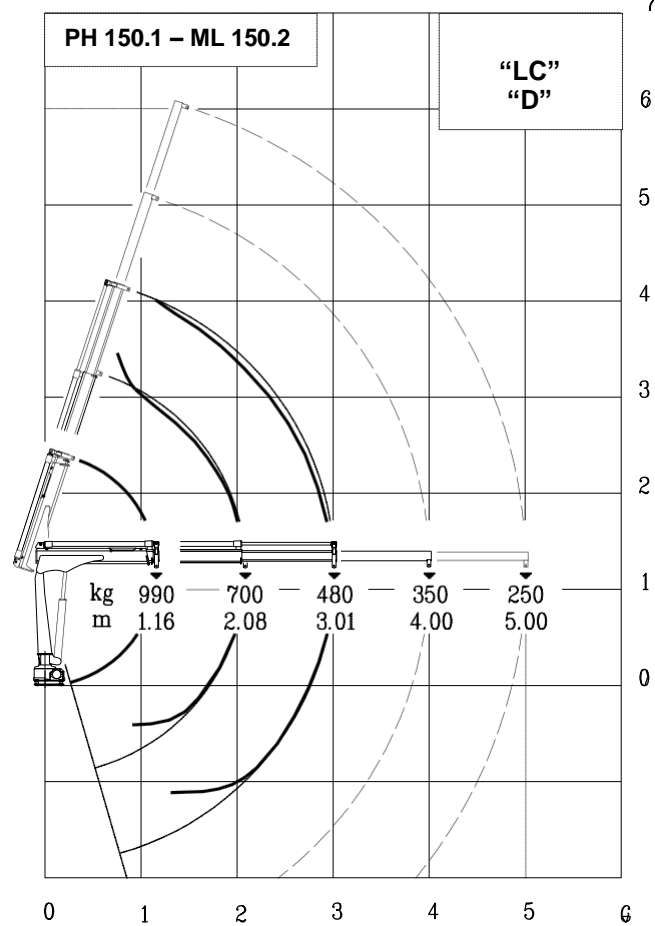
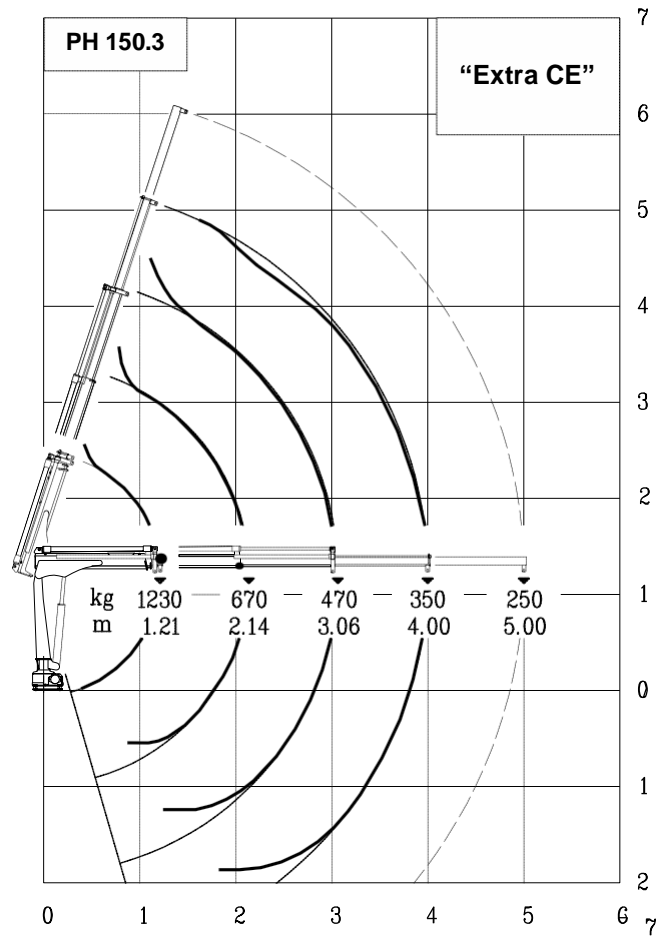
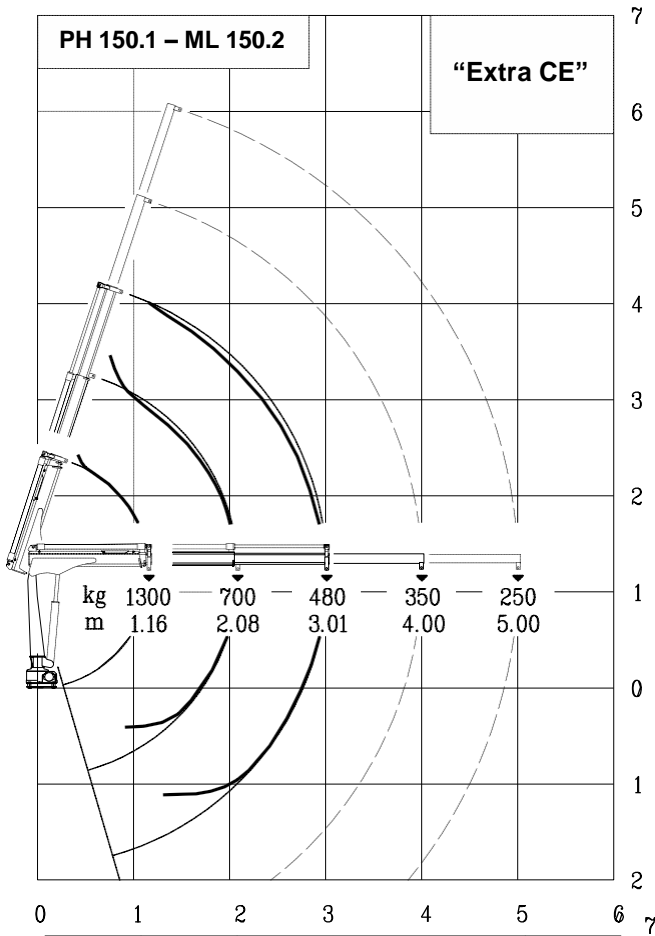
TECHNICAL DATA	U.M.	VERSION		
		PH 150.1	PH 150.2	PH 150.3
CRANE RATING	kNm	14		
STANDARD EXTENSIONS Nr (HYDRAULICS)	N°	1H+1M	2H	3H
STANDARD OUTREACH	m	3.00	3.00	4.00
SLEWING ANGLE	°	330°		
MAXIMUM ANGLE SLOPE	°	5°		
SLEWING TORQUE	kNm	1.6		
MAX. LIFTING HEIGHT FROM CRANE BASE	m	4.00	4.00	5.00
SUGGESTED OIL FLOW	l/min	6-8		
MAX. WORKING PRESSURE	bar	210		
BASIC CRANE WEIGHT VERS. "H" VERS. "E"	kg	165 185	175 195	185 205
BASE WEIGHT WITH EXTENDABLE STABILIZERS	kg	64-88		
BEAM WEIGHT WITH 2 EXTENDABLE STABILIZERS	kg	58-62		
MOTOR ABSORPTION FOR ELECTROHYDR. CRANE 12V	A min/max	70/170	70/170	70/170
MOTOR ABSORPTION FOR ELECTROHYDR. CRANE 24V	A min/max	35/85	35/85	35/85

WINCH SPECIFICATIONS	U.M.	
MAX. WINCH SINGLE LINE CAPACITY (3 <sup>rd</sup> LAYER)	kg	500
ROPE DIAMETER	mm	6
ROPE LENGTH	m	25
WINCH KIT WEIGHT	kg	50

VERSION	DESCRIPTION
"E" 12V	ELECTROHYDRAULIC
"E" 24V	ELECTROHYDRAULIC
"H"	HYDRAULIC

OPERATING TIMES										
VERS.	SLEWING (rpm)	LIFTING (sec)		LOWERING (sec)	EXTENSION OUT (sec)			EXTENSION IN (sec)		
		p min	p max		150.1	150.2	150.3	150.1	150.2	150.3
"E" 12/24V	1.8	14	27	15	12	25	33	6	12	17
"H" (PTO)	2.0	14		15	12	25	33	6	12	17

min. working pressure p max: – max. working pressure



Lifting class **HC1 – HD4/B2**