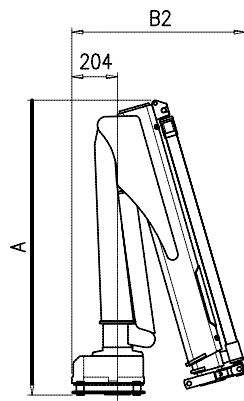
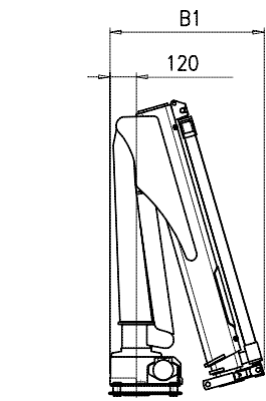




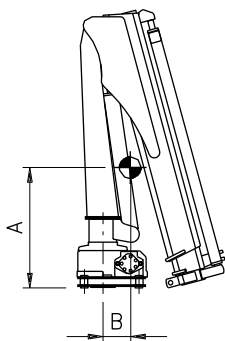
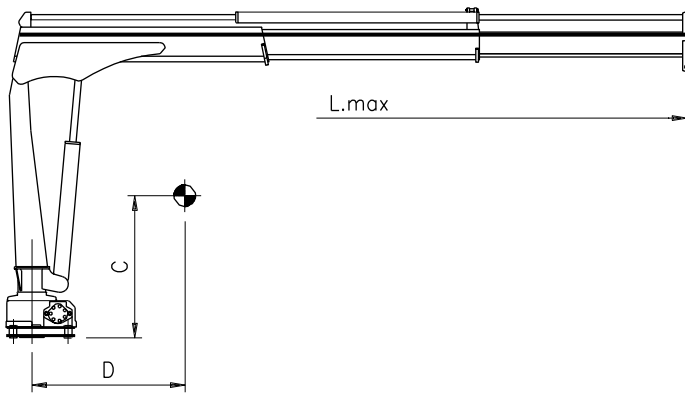
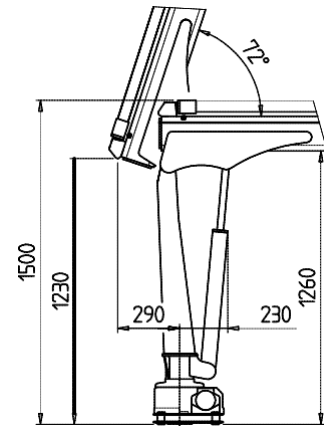
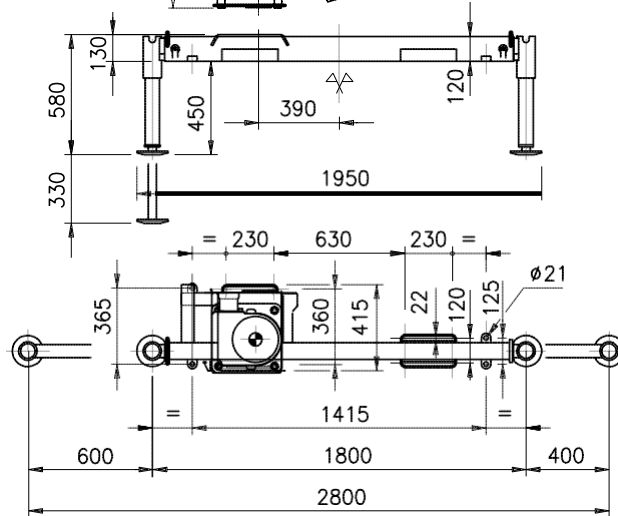
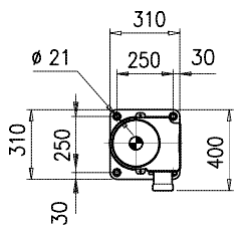
TECHNICAL SHEET



PH 180

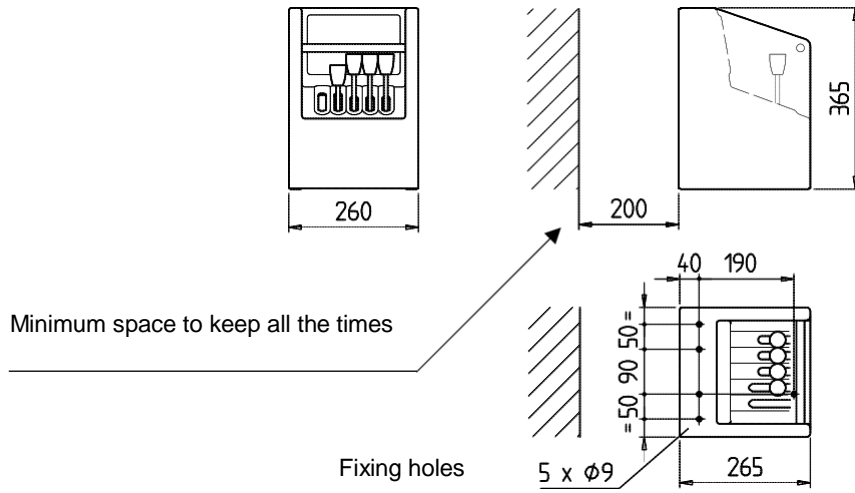


DIMENSIONS			
CRANE	A	B1	B2
PH 180.2	1360	690	780
PH 180.3	1360	790	880

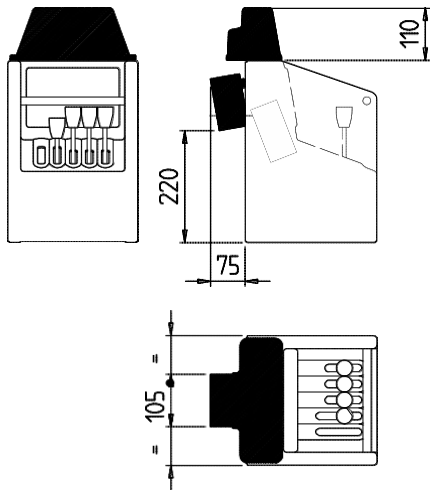


CRANE	A	B	C	D	L max
PH 180.2	520	140	830	610	3000
PH 180.3	530	170	880	840	4000

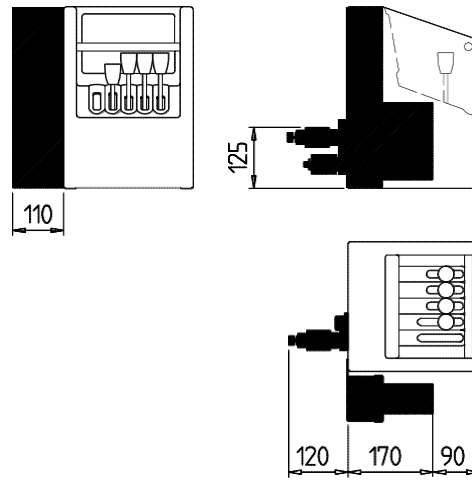
Standard controlstation



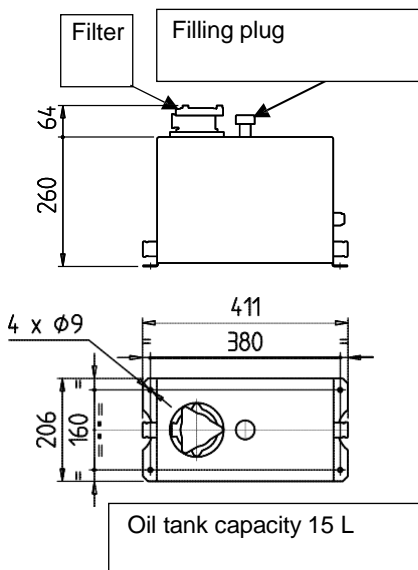
Control station with SCU



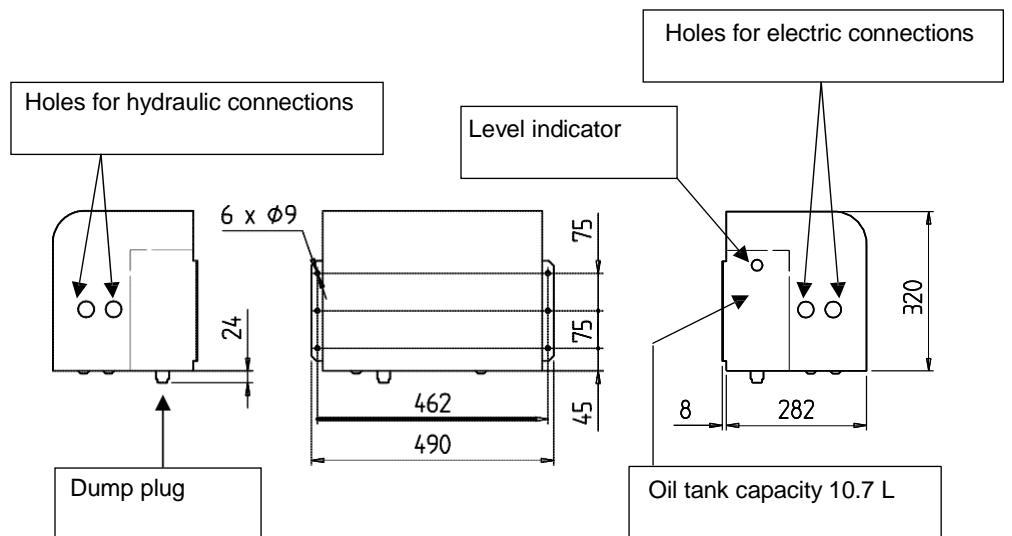
Control station with remote control



Oil tank for H version



Power pack (E version)



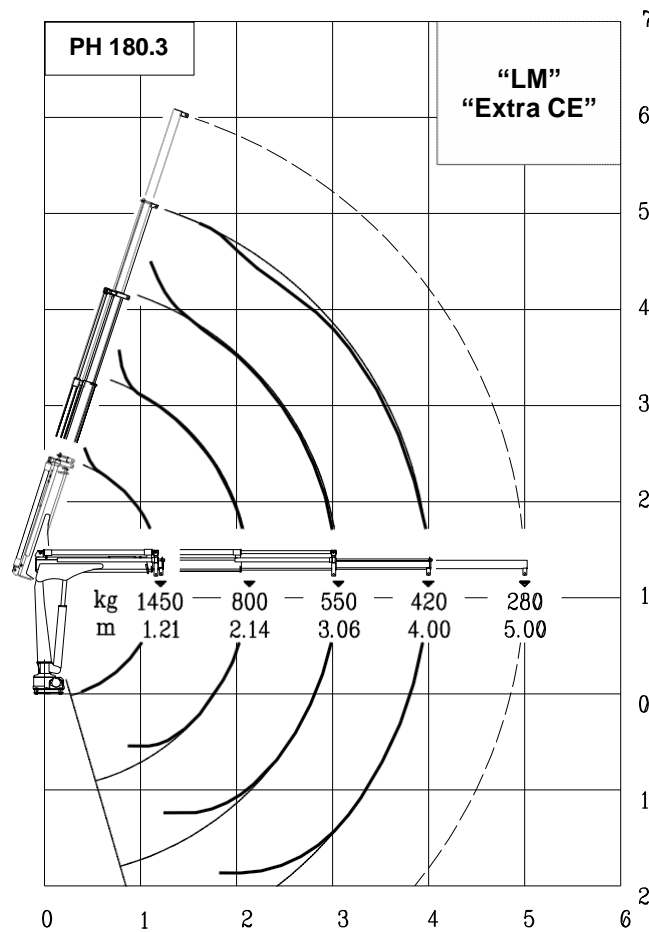
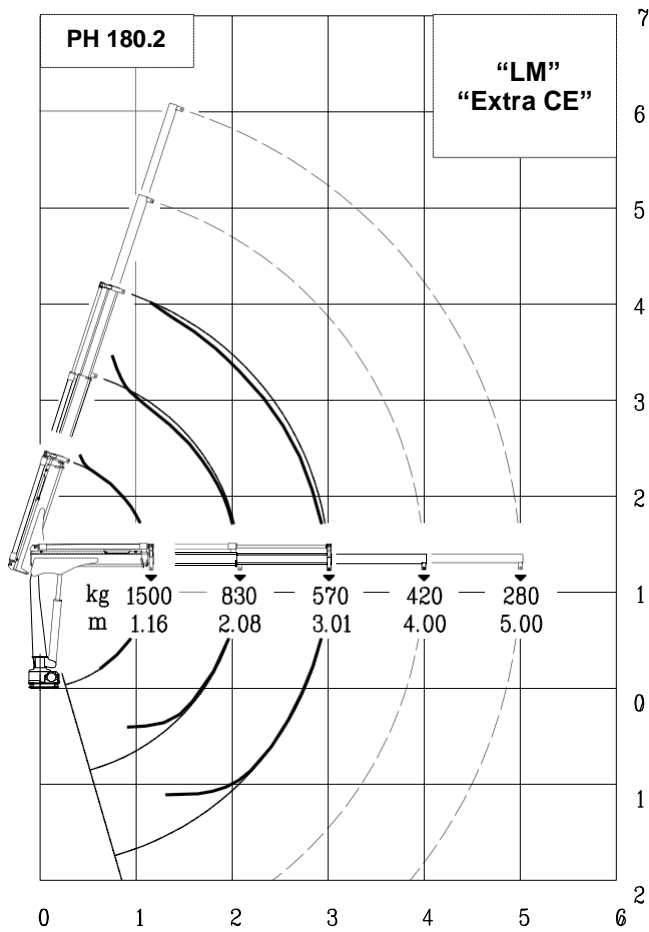
TECHNICAL DATA	U.M.	VERSION	
		PH 180.2	ML 180.3
CRANE RATING	kNm	17	
STANDARD EXTENSIONS Nr (HYDRAULICS)	N°	2H	3H
STANDARD OUTREACH	m	3.00	4.00
SLEWING ANGLE	°	330°	
MAXIMUM ANGLE SLOPE	°	5°	
SLEWING TORQUE	kNm	2.0	
MAX. LIFTING HEIGHT FROM CRANE BASE	m	4.00	5.00
SUGGESTED OIL FLOW	l/min	6-8	
MAX. WORKING PRESSURE	bar	210	
BASIC CRANE WEIGHT	kg	180 200	190 210
BASE WEIGHT WITH EXTENDABLE STABILIZERS	kg	102-109	
BEAM WEIGHT WITH 2 EXTENDABLE STABILIZERS	kg	69-83	
MOTOR ABSORPTION FOR ELECTROHYDR. CRANE 12V	A min/max	70/170	70/170
MOTOR ABSORPTION FOR ELECTROHYDR. CRANE 24V	A min/max	35/85	35/85

WINCH SPECIFICATIONS	U.M.	
MAX. WINCH SINGLE LINE CAPACITY (3 rd LAYER)	kg	500
ROPE DIAMETER	mm	6
ROPE LENGTH	m	25
WINCH KIT WEIGHT	kg	50

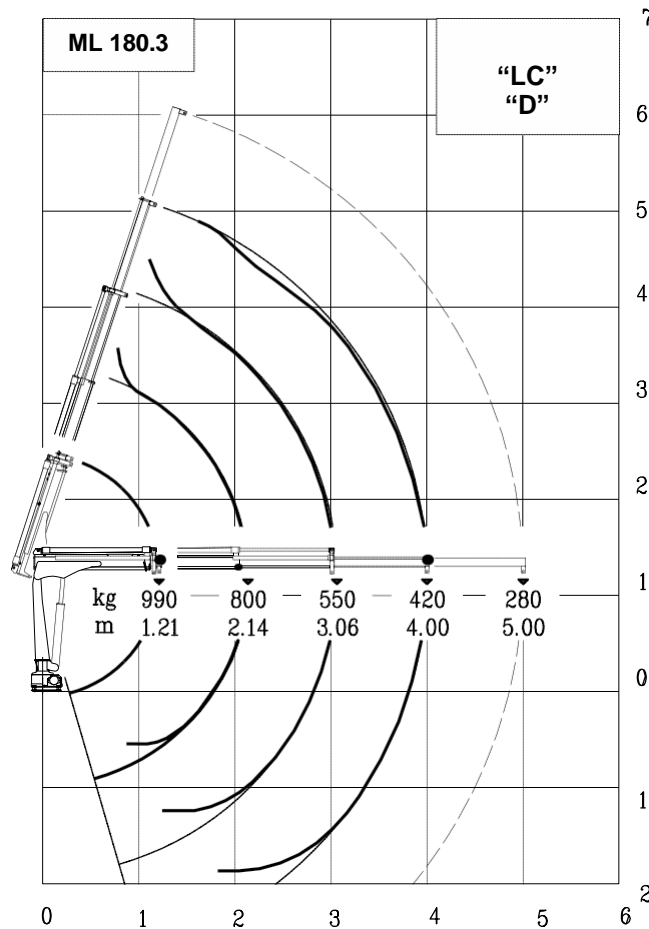
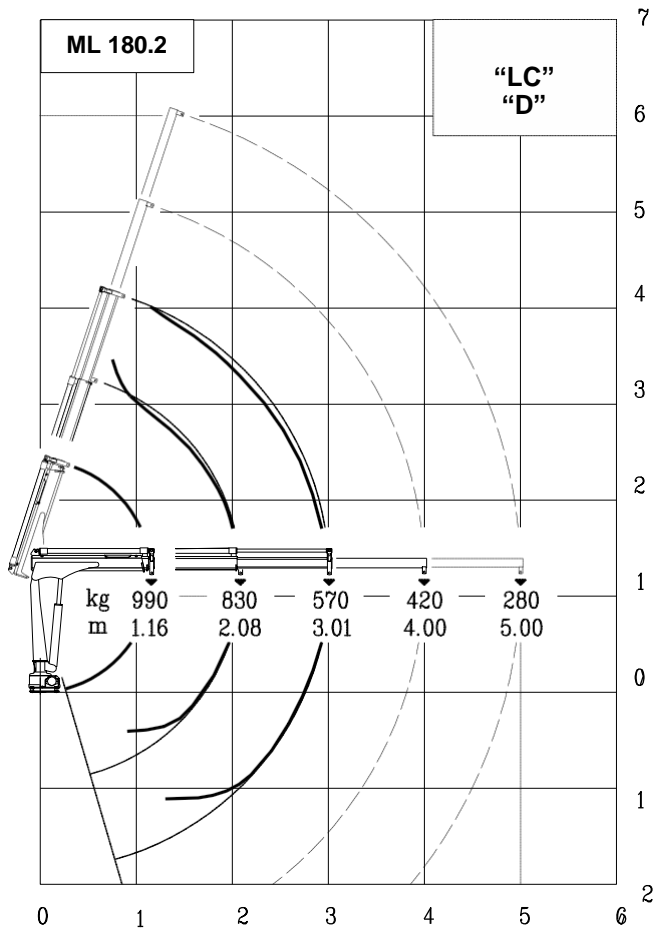
VERSION	DESCRIPTION
"E" 12V	ELECTROHYDRAULIC
"E" 24V	ELECTROHYDRAULIC
"H"	HYDRAULIC

OPERATING TIMES								
VERS.	SLEWING (rpm)	LIFTING (sec)		LOWERING (sec)	EXTENSION OUT (sec)		EXTENSION IN (sec)	
		p min	p max		180.2	180.3	180.2	180.3
"E" 12/24V	1.8	17	32	12	25	33	12	17
"H" (PTO)	2.0	17		12	25	33	12	17

min. working pressure
max. working pressure



In the “LM” version, the mechanical extensions are not controlled by the load limiter



Lifting class

HC1 – HD4/B2