

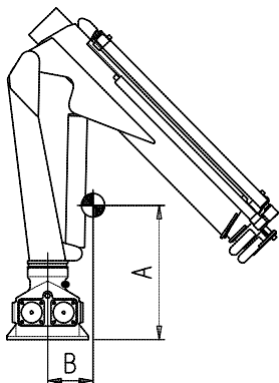
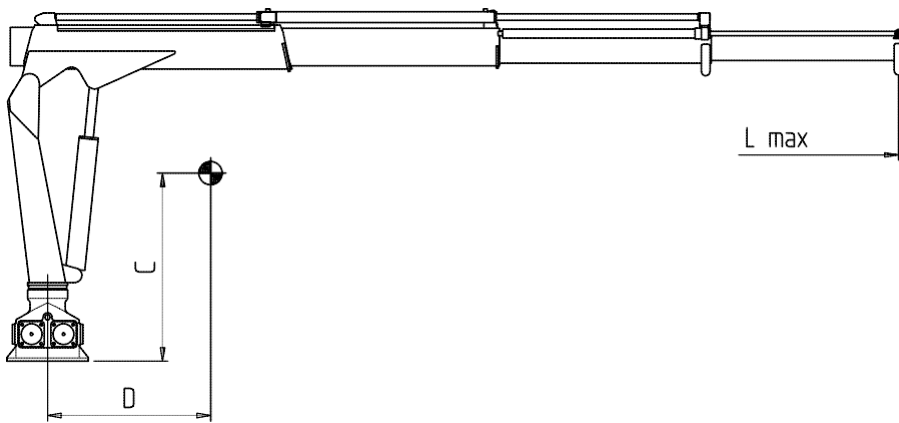
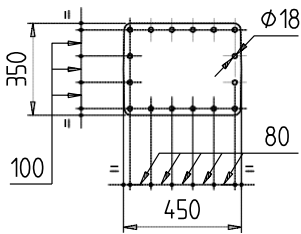
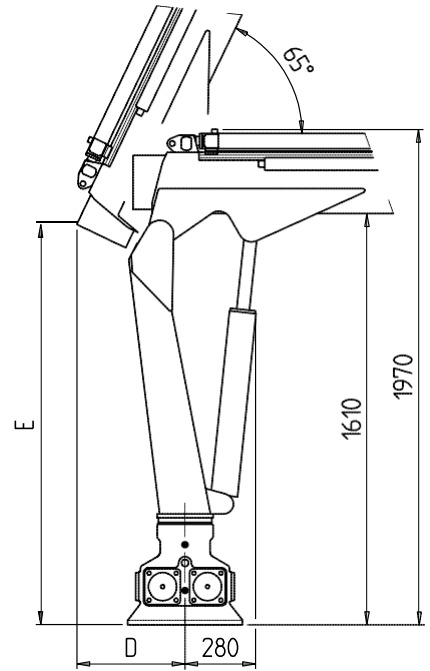
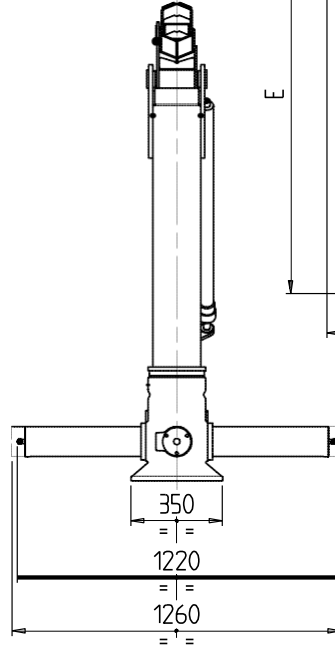
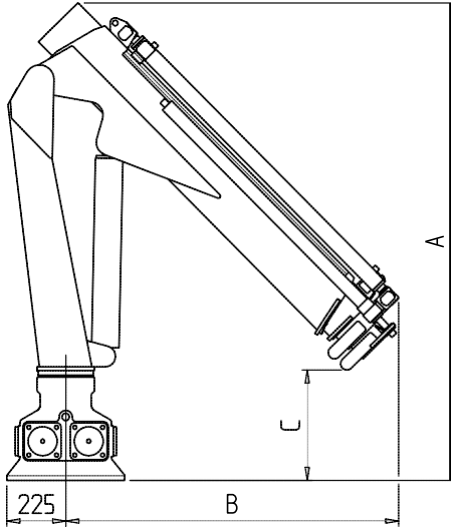


TECHNICAL SHEET



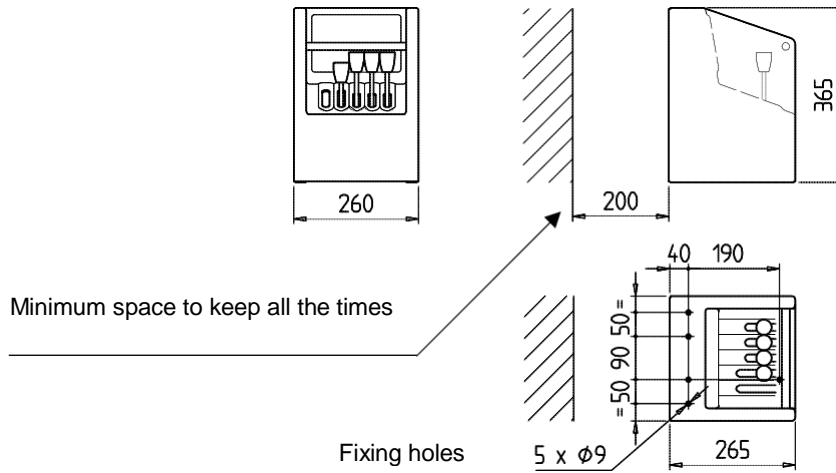
PH 400

DIMENSIONS					
CRANE	A	B	C	D	E
PH 400.2	1830	1280	460	430	1570
PH 400.3	1830	1280	420	430	1570
PH 400L.2	1800	1450	280	410	1610
PH 400L.3	1800	1450	240	410	1610
PH 400L.4	1800	1490	200	410	1610

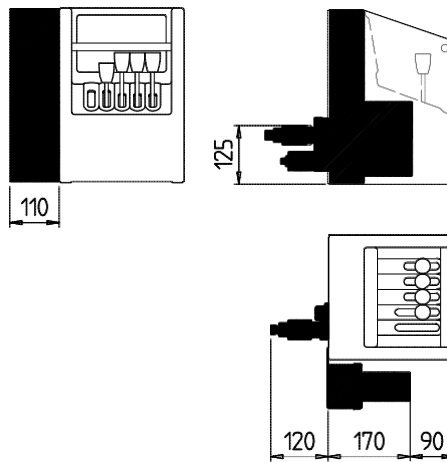


CRANE	A	B	C	D	L max
PH 400.2	710	200	920	550	3640
PH 400.3	730	240	980	800	4700
PH 400L.2	670	270	950	740	4390
PH 400L.3	690	320	1020	1100	5750
PH 400L.4	700	360	1060	1370	6830

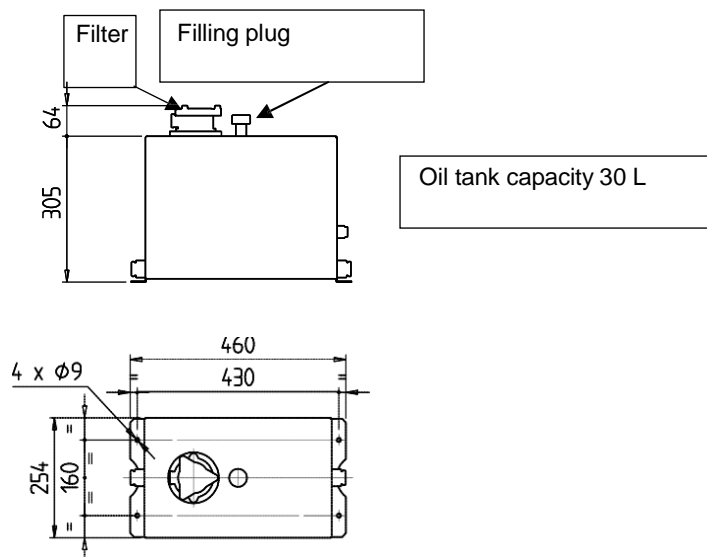
Standard control station



Control station with remote control



Oil tank

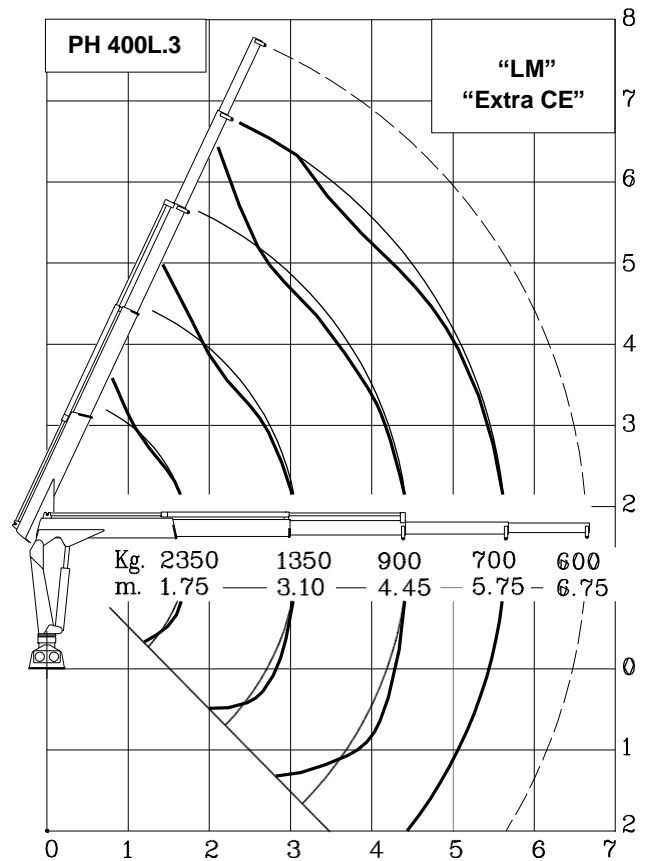
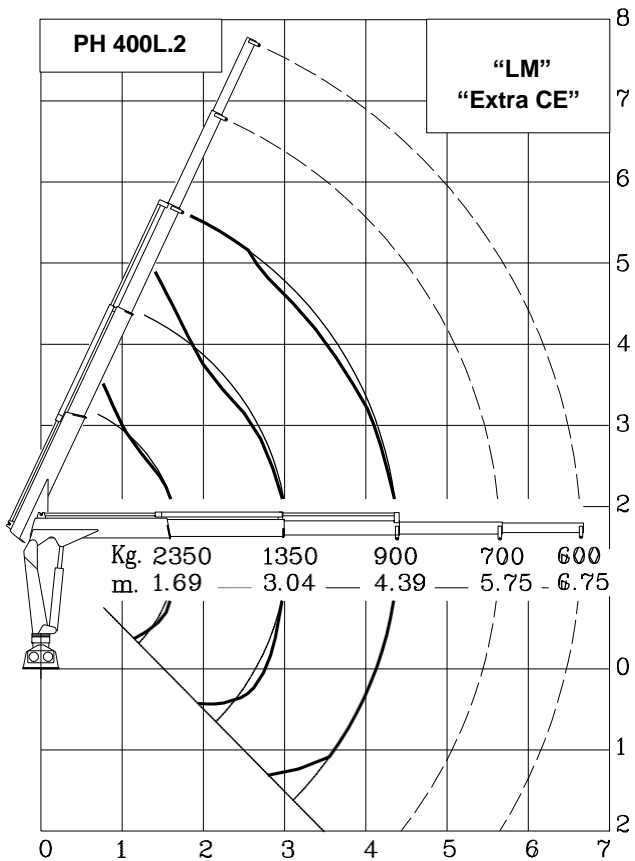
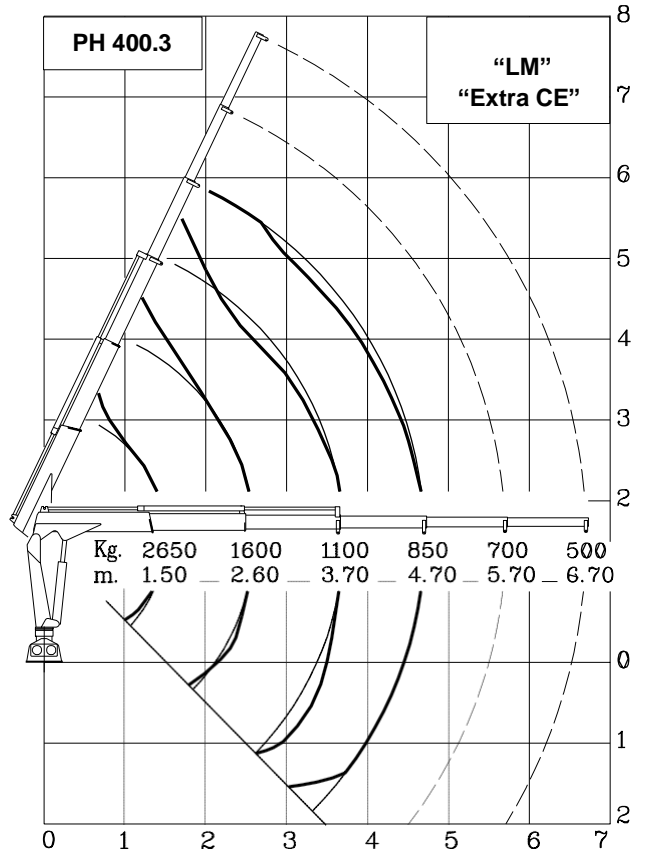
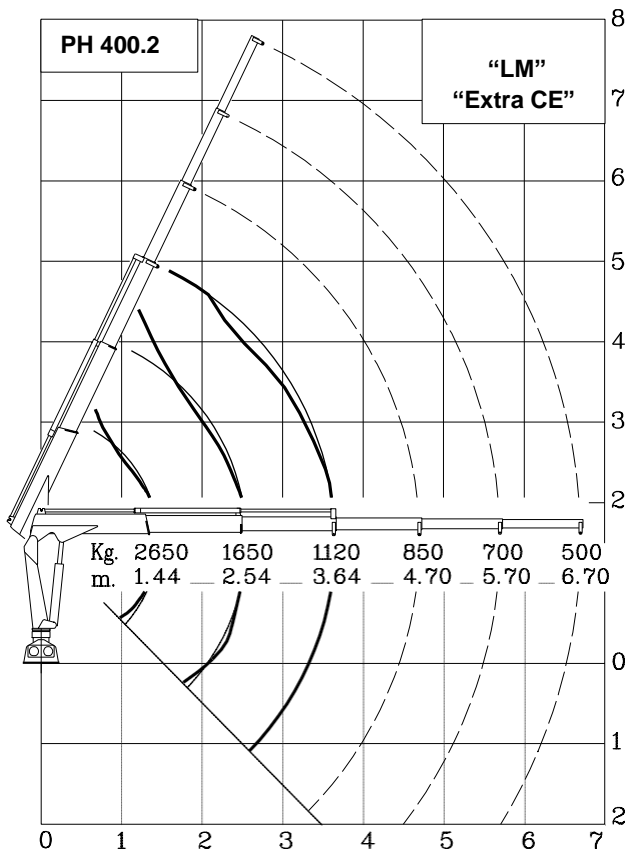


TECHNICAL DATA	U.M.	VERSION				
		PH 400.2	PH 400.3	PH 400L.2	PH 400L.3	PH 400L.4
CRANE RATING	KNm	42				
STANDARD EXTENSIONS Nr (HYDRAULICS)	N°	2	3	2	3	4
STANDARD OUTREACH	m	3.64	4.70	4.39	5.75	6.83
SLEWING ANGLE	°	360°				
MAXIMUM ANGLE SLOPE	°	15°				
SLEWING TORQUE	kNm	16				
MAX. LIFTING HEIGHT FROM CRANE BASE	m	4.85	5.85	5.60	6.85	7.50
SUGGESTED OIL FLOW	l/min	15 - 18				
MAX. WORKING PRESSURE	bar	230				
BASIC CRANE WEIGHT	kg	460	500	490	540	570

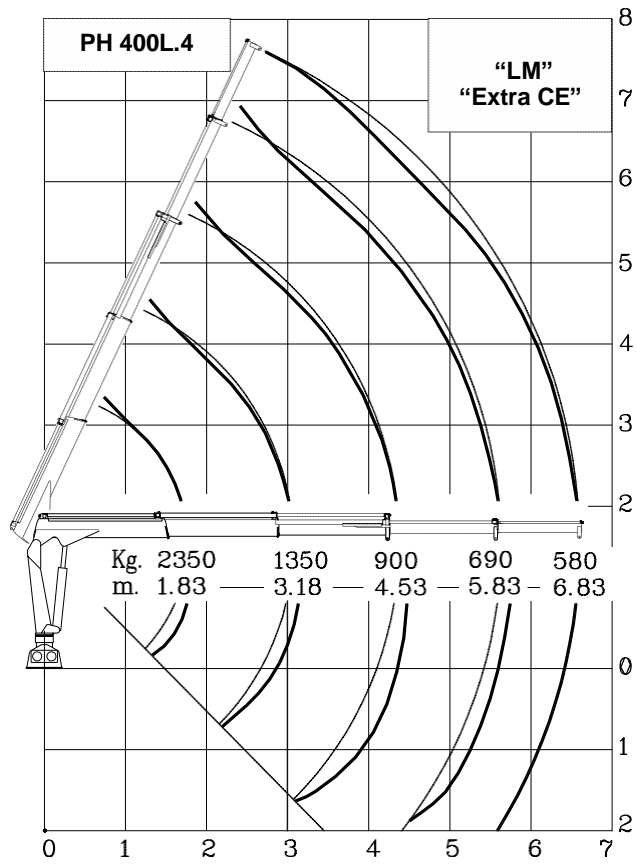
WINCH SPECIFICATIONS	U.M.	
MAX. WINCH SINGLE LINE CAPACITY (3 rd LAYER)	kg	990 ("CE") 1000 (EXTRA "CE")
ROPE RAISING SPEED (3 rd LAYER)	m/min	15
ROPE LOWERING SPEED (3 rd LAYER)	m/min	20
ROPE DIAMETER	mm	8
ROPE LENGTH	m	30
WINCH KIT WEIGHT	kg	75

OPERATING TIMES												
. SLEW. (rpm)	LIFTING (sec)	LOWER. (sec)	EXTENSION OUT (sec)					EXTENSION IN (sec)				
			400.2	400.3	400L.2	400L.3	400L.4	400.2	400.3	400L.2	400L.3	400L.4
2.3	13	11	17	22	20	31	36	10	12	12	18	21

Winch versions: Maximum lifting capacity 990 kg ("CE" version) or 1000 kg (EXTRA "CE" version), in single pull line, without strain limiting device; outreaches unchanged.



In the "LM" version, the mechanical extensions are not controlled by the load limiter



Lifting class **HC1 – HD4/B3**