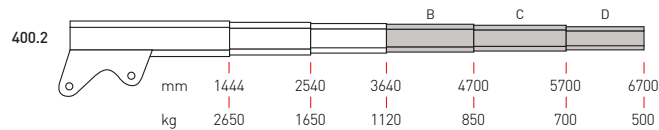
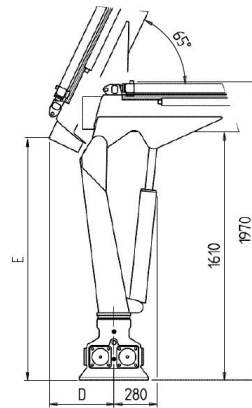
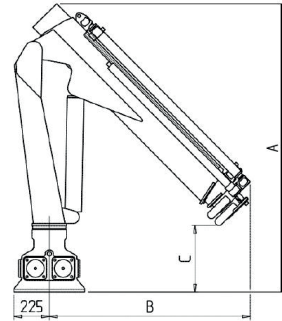


# PH400.2

TECHNICAL DATA	PH400.2
Lifting capacity	42kNm
Max. lifting height from crane base	4850mm
Max. working slope	15°
Max. working pressure	230bar
Suggested oil flow	15-18l per min.
Hydraulic oil tank capacity	30l

CRANE WEIGHTS	kg
PH400.2	460

CRANE	DIMENSIONS				
	A	B	C	D	E
PH 400.2	1830	1280	460	430	1570



Hydraulic extension    
  Standard manual extension    
  B/C/D Optional manual extension    
 \* "D" version



Penny Hydraulics Limited

Station Road | Clowne | Chesterfield | Derbyshire | S43 4AB | United Kingdom  
 t +44 (0) 1246 811475 | f +44 (0) 1246 810403

w [www.pennyhydraulics.com](http://www.pennyhydraulics.com) | e [sales@pennyhydraulics.com](mailto:sales@pennyhydraulics.com)