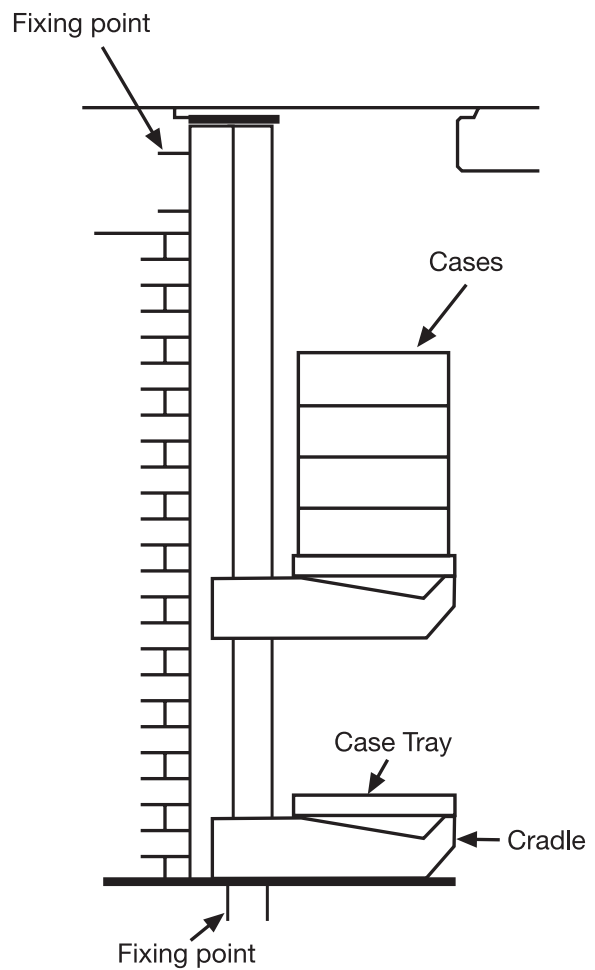
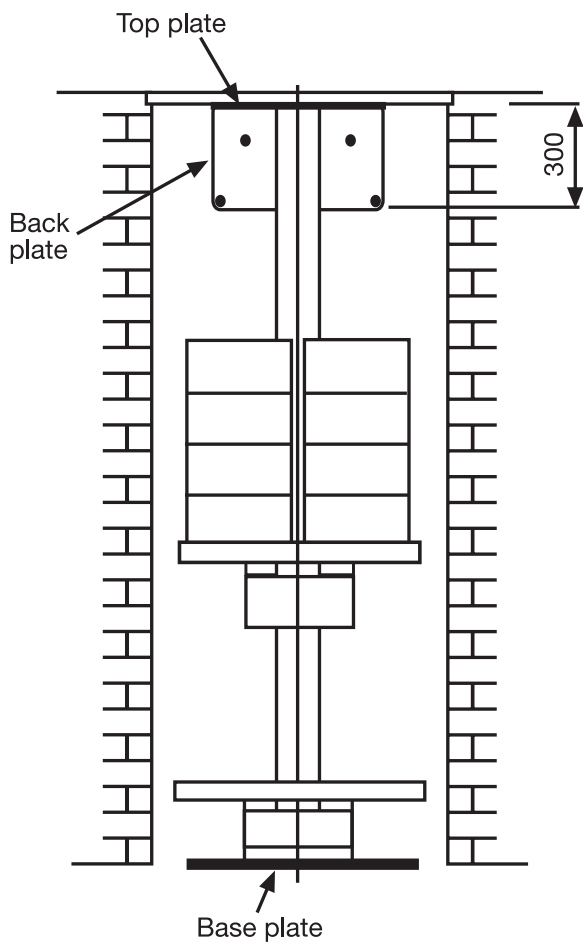
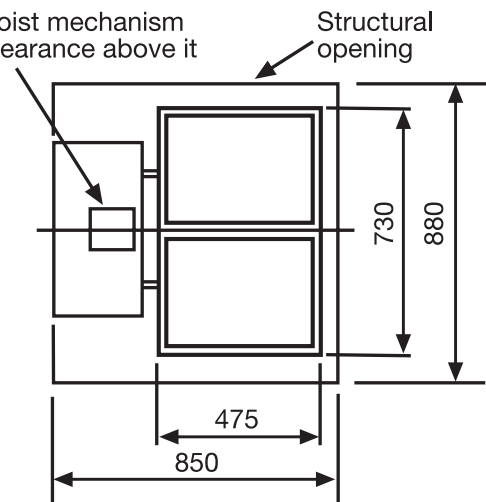


Double Stack Case Hoist



This hatch houses the hoist mechanism and requires 1500mm clearance above it



The hoist can be manufactured to suit most opening sizes

Not suitable for drops over 3.8 meters, a chain driven CellarLift would be used.

- Unique hold-to-run control handle.
- For internal and external applications.
- No pit required at lower level.

The height of a CellarLift once manufactured is not adjustable

ELECTRIC SUPPLY - 20A, 240V, 1PH terminated into a double pole switch at lower level