

# TECHNICAL DOCUMENT

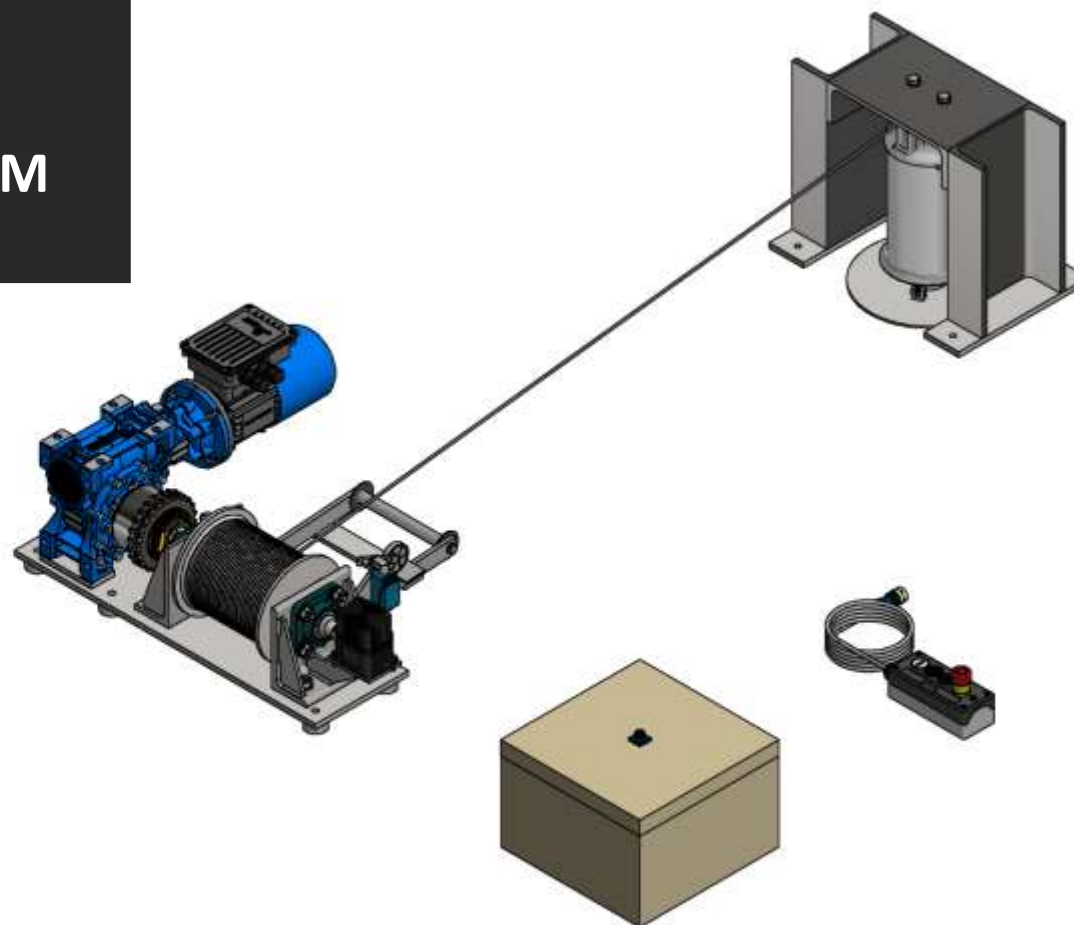
## RLS-100

### SINGLE ROPE ELECTRIC WINCH SYSTEM

MAX LOAD: 100 kg (220 lbs)

MAX LOWERING DISTANCE: 10 m (32.8')

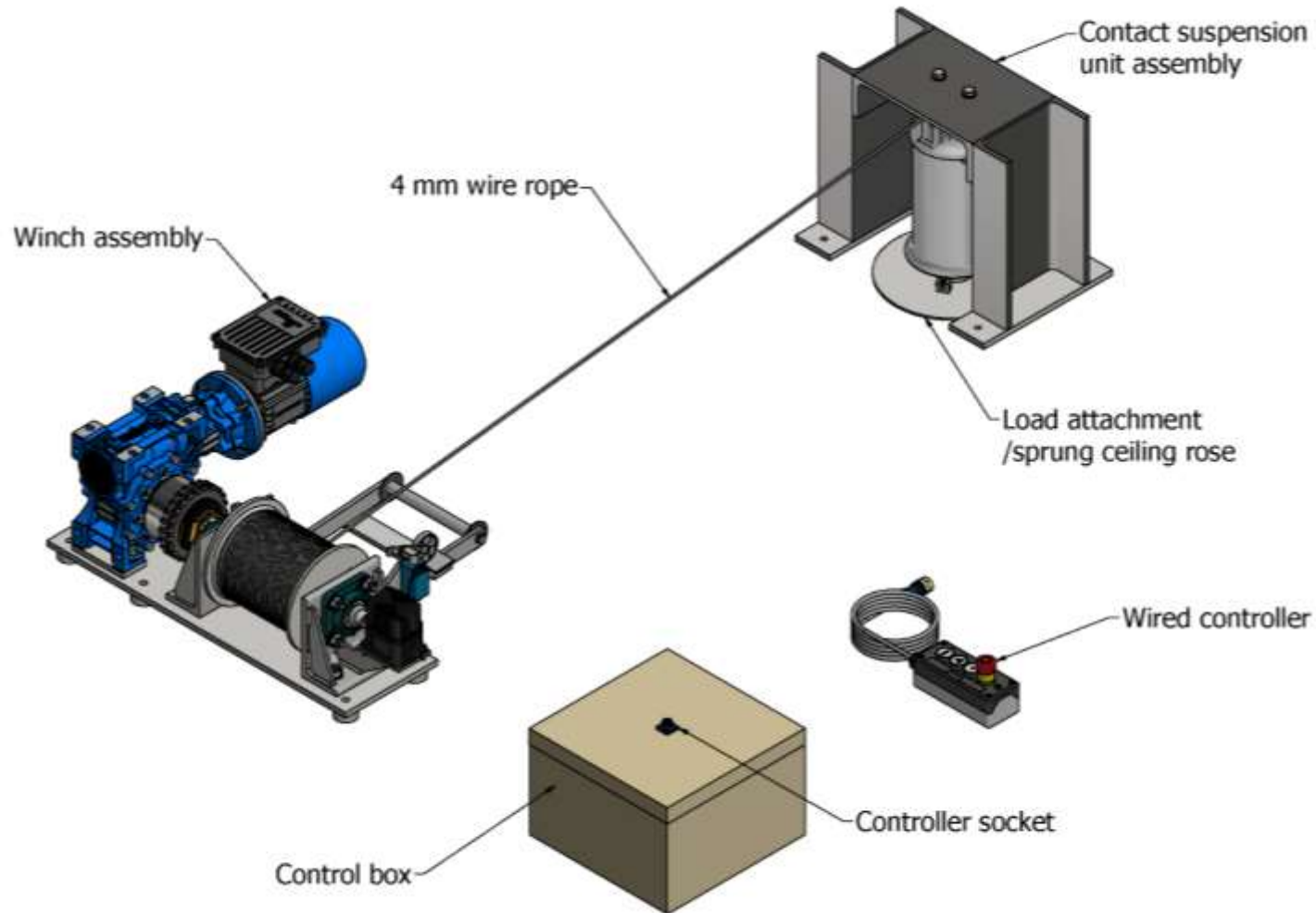
SKU: 872-000078



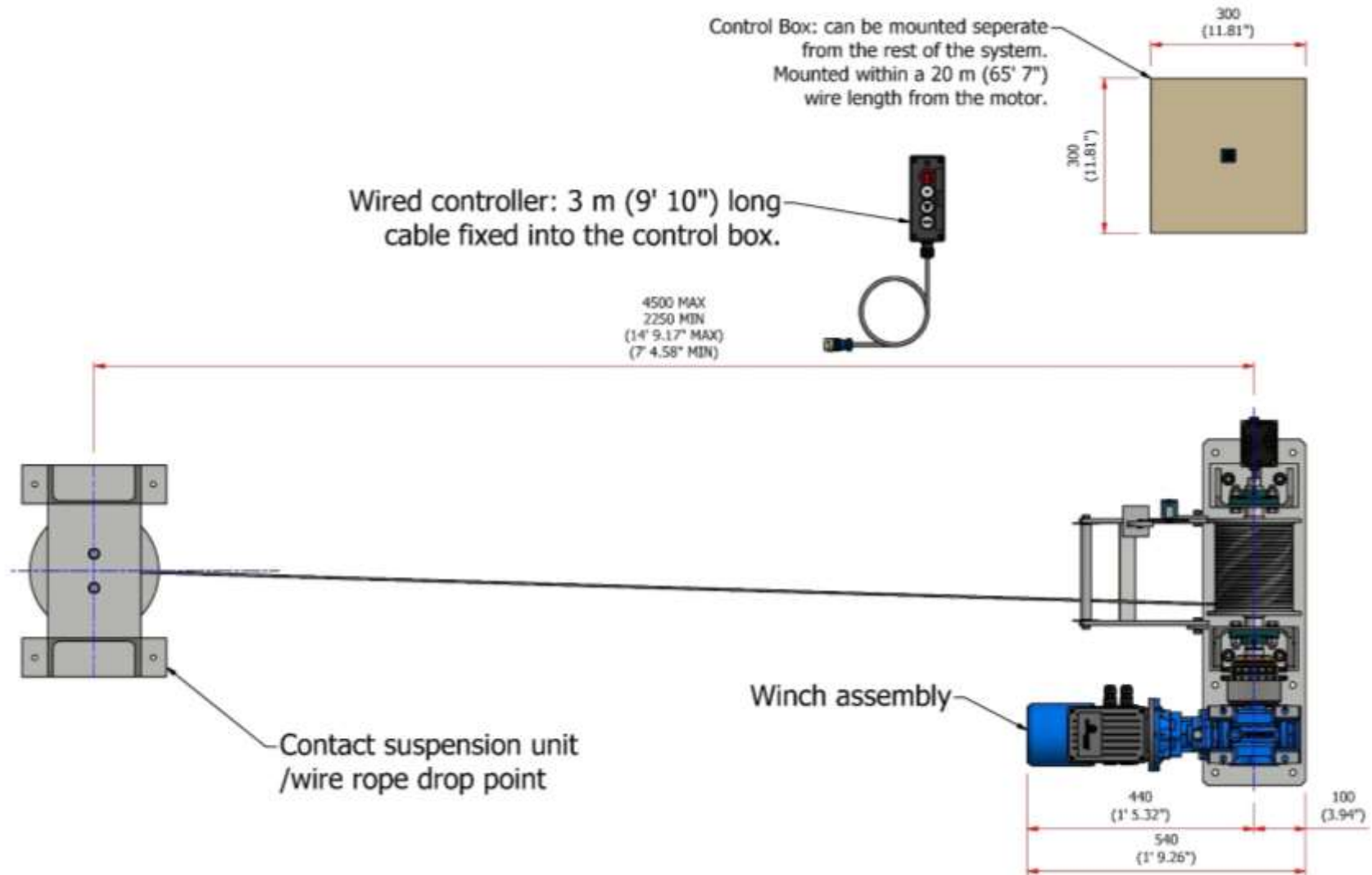
# Contents

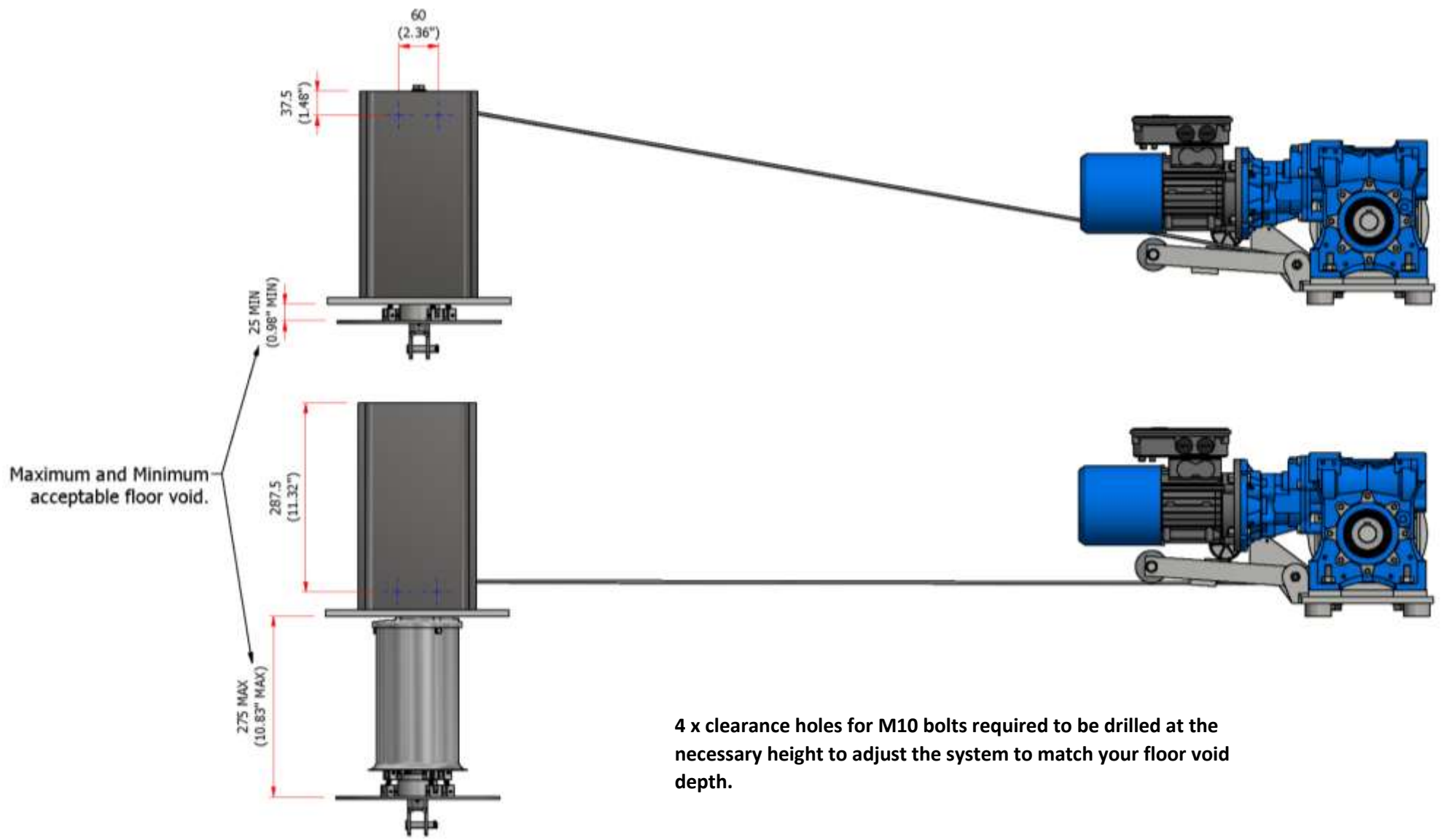
Contents.....	2
System overview .....	3
Min/max layout distances.....	4
Electric winch dimensions.....	6
Drop point assembly dimensions.....	7
Load attachment/sprung ceiling plate detail.....	8
Contact Suspension Unit docking positions/dimensions.....	9
Mounting dimensions .....	10
System loadings .....	11
Winch system technical specifications .....	12
Wired remote control technical specifications.....	13
Wireless radio remote system technical specifications.....	14

## System overview



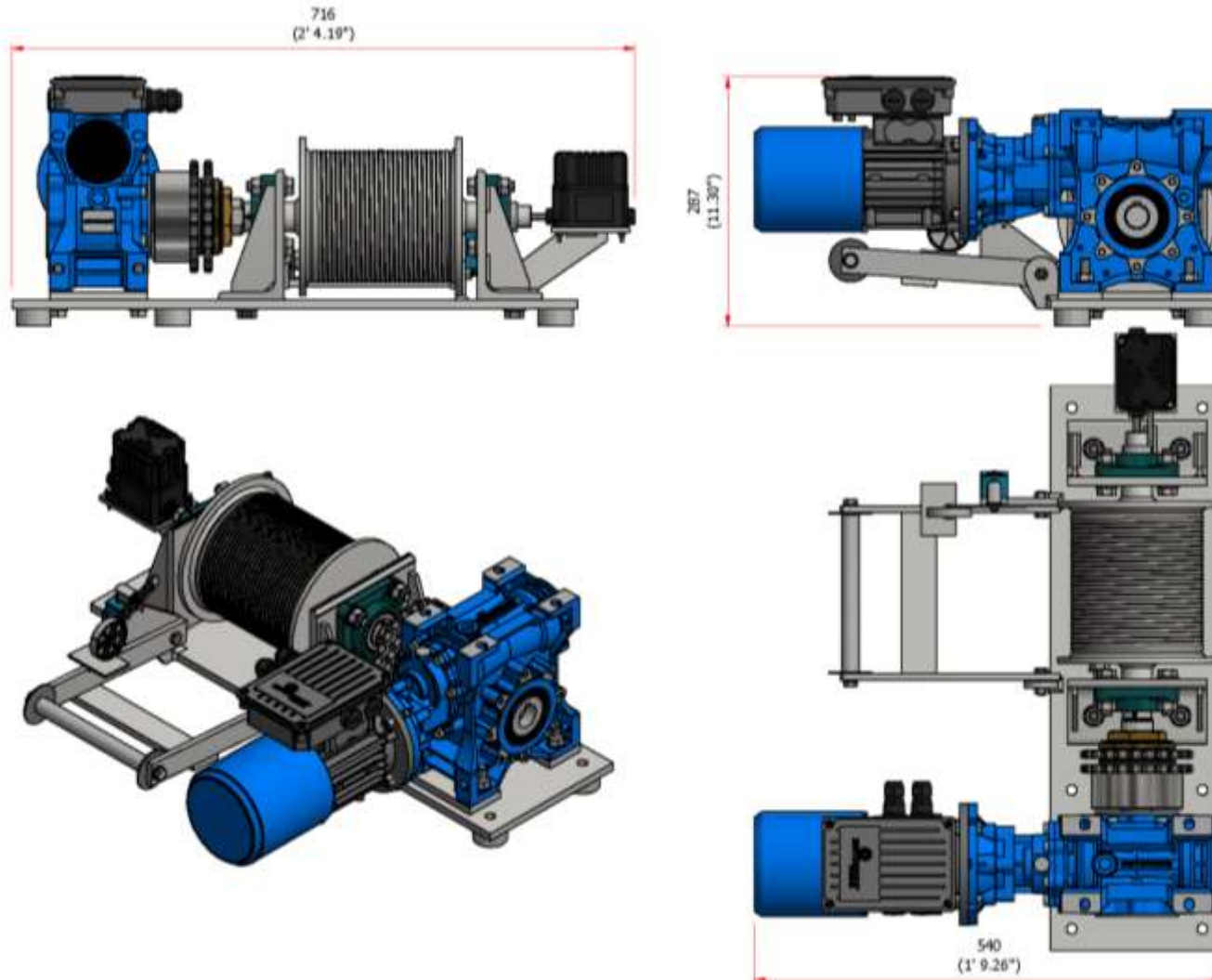
# Min/max layout distances





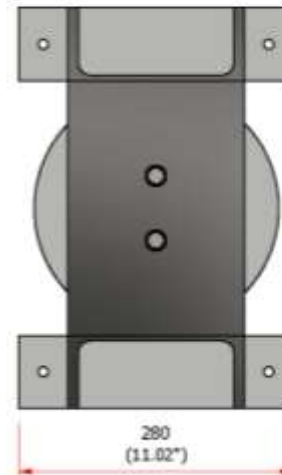
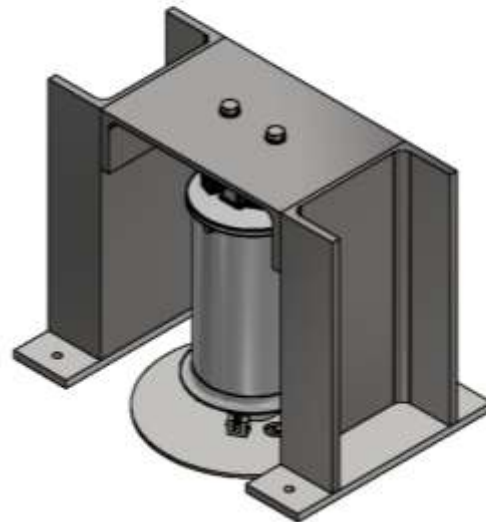
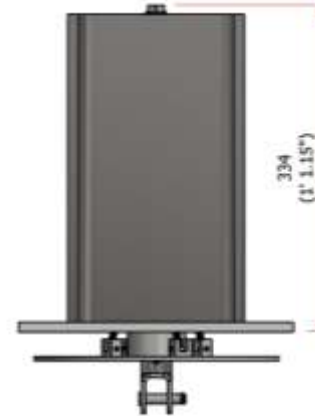
# Electric winch dimensions

Mass: 57 kg (126 lbs)

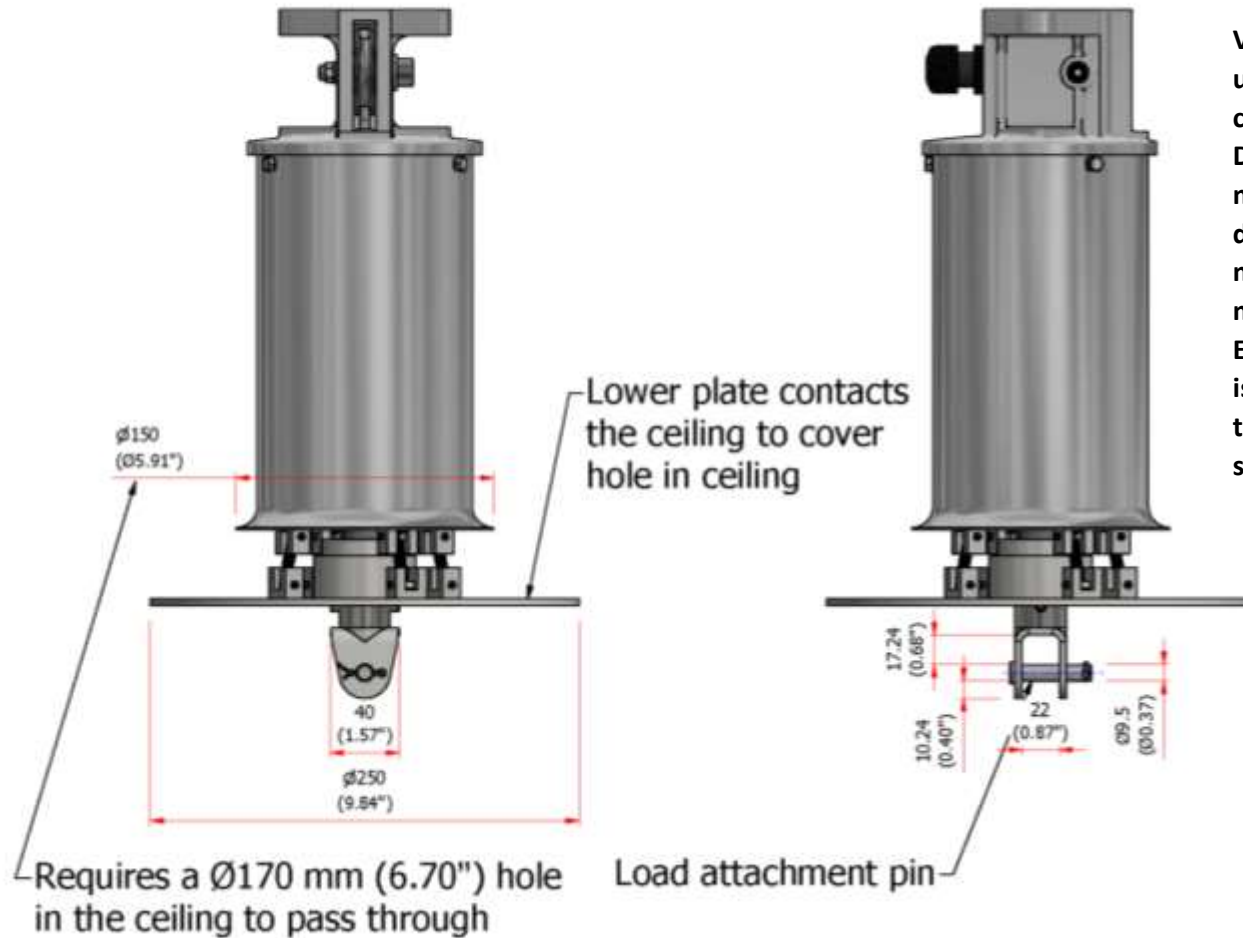


# Drop point assembly dimensions

Mass: 27 kg (60 lbs)



## Load attachment/sprung ceiling plate detail



Visible underside of plate undercoat painted to allow easy customisation with ceiling finish. Decorative ceiling rose can be mounted onto this plate by drilling and tapping. Permissible maximum additional installation mass to ceiling rose of 5 kg. Ensure any extra installed weight is considered and never exceed the overall maximum permissible system load of 100 kg.

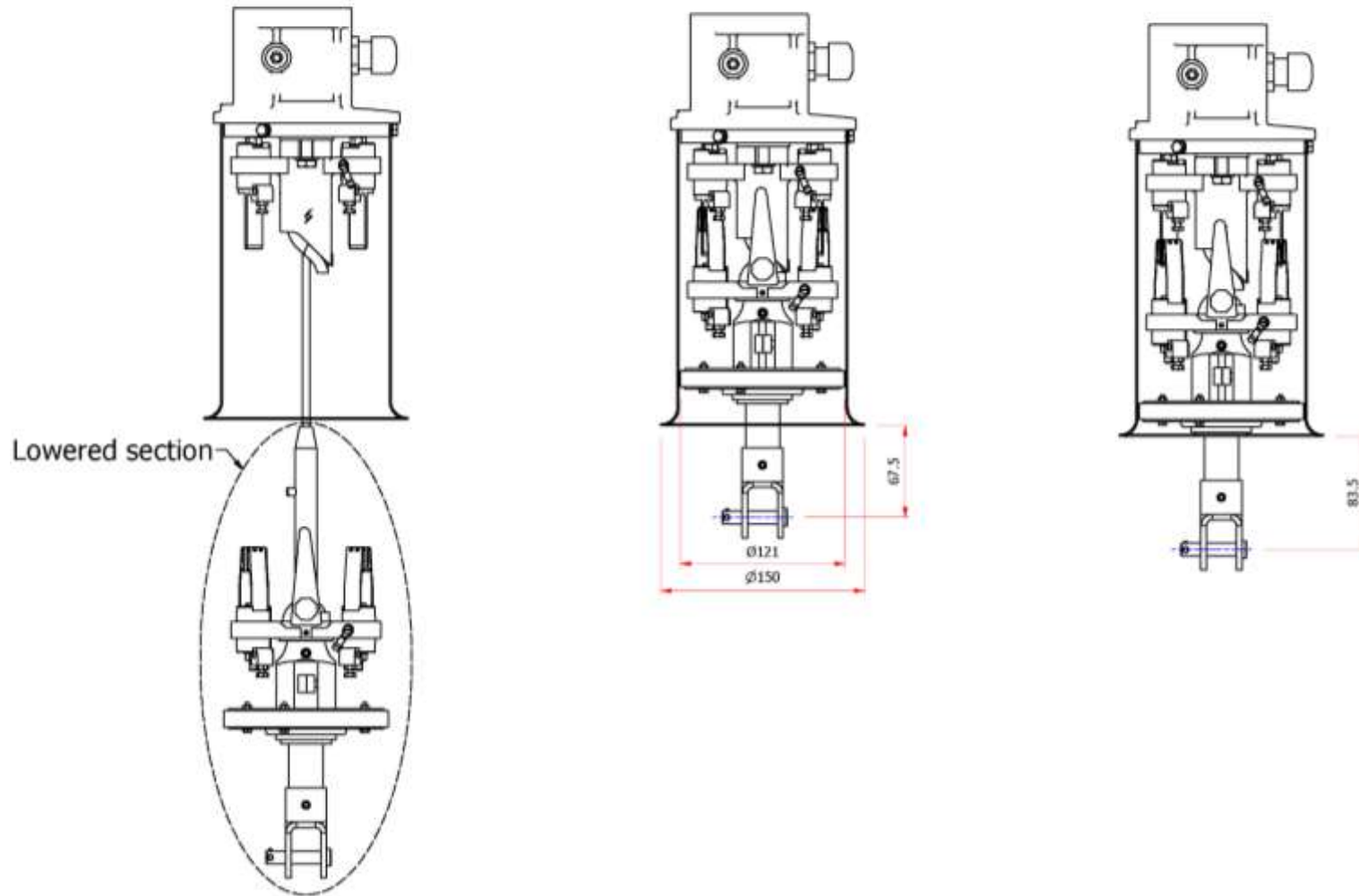


# Contact Suspension Unit docking positions/dimensions

Lowered position

Raised during docking process

Docked position

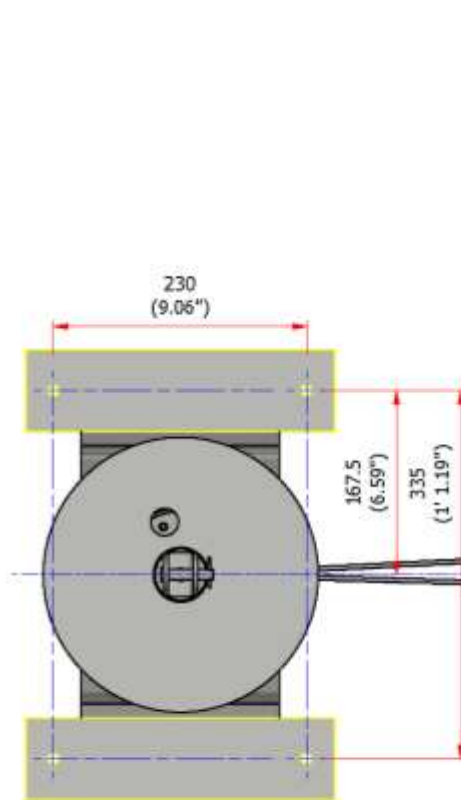


# Mounting dimensions

## Pulley Assembly Mounting

4 x M10 fasteners

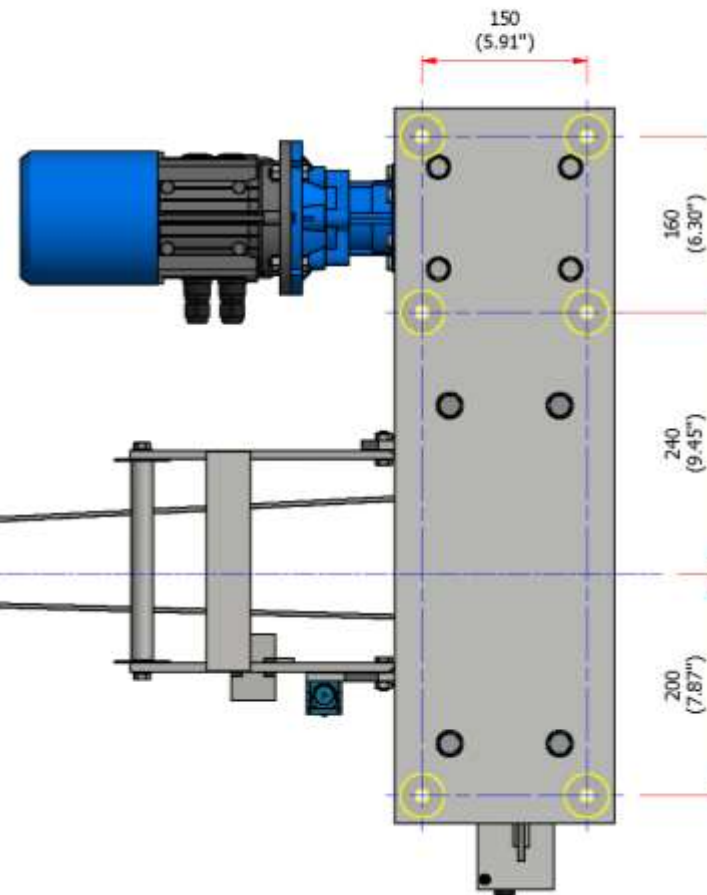
Pulley Assembly Mass: 27 kg (60 lbs)



## Winch Assembly Mounting

6 x M12 fasteners

Winch Assembly Mass: 57 kg (126 lbs)

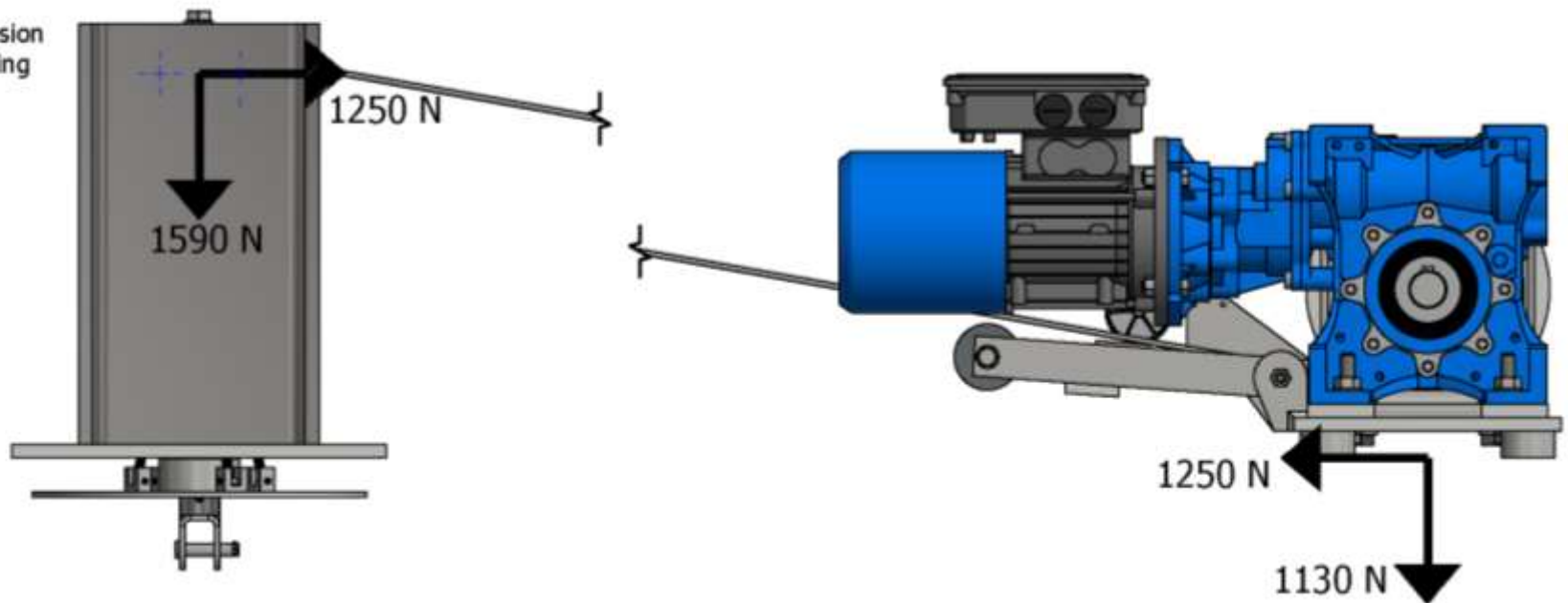


# System loadings

## Maximum Loading Produced

Includes: proof operation loading of 25% over SWL and self weight

Moment at contact suspension unit base changes depending on the unique mounting position on the channels.



## Winch system technical specifications

<b>Maximum load</b>	100 kg (220 lbs)
<b>Maximum lowering distance</b>	10 m (32' 8")
<b>Power feed to load</b>	3 contacts, 30 A per contact
<b>Winch system power requirements</b>	13 A 240 V single phase, 50 Hz (USA – 13 A, 120 V single phase, 60 Hz)
<b>Shipping dimensions</b>	900 x 750 x 350 mm (35.4" x 29.5" x 13.7")
<b>Shipping weight</b>	90 kg (198 lbs)
<b>No of automatic stop positions</b>	2
<b>Raising/lowering speed</b>	1.2 m/min (3.3 ft/min)
<b>Running noise</b>	Lift operating when loaded below 46 dB(A)
<b>Running mode</b>	Soft start/stop
<b>Installation environment</b>	Internal use only
<b>Control type</b>	Wired remote control (standard), radio wireless system (optional)
<b>Conformity</b>	The Supply of Machinery (Safety) Regulations 1998 BS 7906-1 Category B BS EN ISO 12100:2010 Safety of Machinery – General principles for design – Risk assessment and risk reduction 2014/30/EU Electromagnetic Compatibility Directive 2014/35/EU Low Voltage Directive Lifting Operations and Lifting Equipment Regulations 1998

**Contact Penny Hydraulics if a different system specification is required.**

## Wired remote control technical specifications

<b>Cable length</b>	3 m (9' 10")
<b>Protection class</b>	IP65
<b>Housing material</b>	Polycarbonate
<b>Functions</b>	3 – Hold to run + E-Stop
<b>Dimensions</b>	166 x 68 x 53 mm (6.5" x 2.7" x 2.1")
<b>Mass</b>	0.4 kg (0.9 lbs)

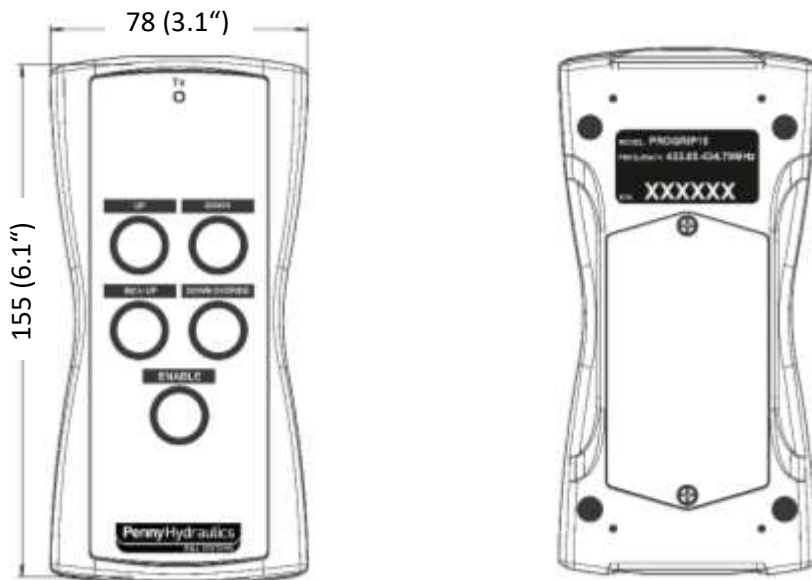


# Wireless radio remote system technical specifications

(must be specified as optional extra)

## Progrip handset

<b>Power supply</b>	4.5 V (3x AA Batteries)
<b>Frequency</b>	433.05-434.79 MHz
<b>Antenna</b>	Internal
<b>Range</b>	Up to 100 m (328')
<b>Protection class</b>	IP65
<b>Housing material</b>	ABS
<b>Functions</b>	4 – Hold to run (with Enable)
<b>Dimensions</b>	160 x 78 x 35 mm (6.2" x 3" x 1.4")
<b>Mass</b>	240 g (8.5 oz)



## Ultrabeam DC4 receiver

<b>Power supply</b>	12-28 VDC
<b>Frequency</b>	433.05-434.79 MHz
<b>Antenna</b>	External
<b>Protection class</b>	IP65
<b>Housing material</b>	ABS (UL94-HB)
<b>Dimensions</b>	145 x 91 x 55 mm (5.7" x 3.5" x 2.2")
<b>Mounting</b>	4x clearance holes for M4 bolts/4mm screws
<b>Rated load</b>	10 A at 24 VDC / 250 VAC

